



# Benda Ranch



## Simm-Angus & Simmentals

Monday, February 11, 2013 1:00 P.M.

Kimball Livestock Exchange  
Kimball, South Dakota



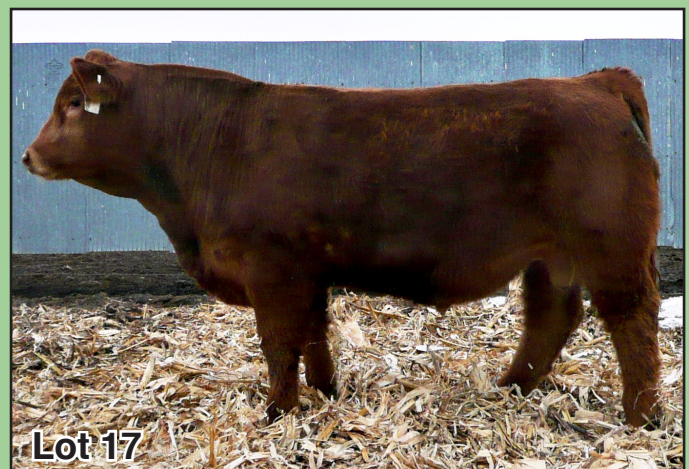
**JBS Mr. HF Answer 067Z**



**JBS Mr. Force 407Z**



**JBS Mr. Indy 828Z**



**JBS Mr. Pace 918Z**

Sale Day Phone: (605) 778-6211

*A Tribute to a  
Great Man:*



On September 30, 2012 we lost my dad exactly one year to the day my mom passed away.

Dad and Mom worked side by side for 63 years on the family farm south of Kimball.

Ted loved the land and was a livestock producer his entire life, taking great pride in raising quality cattle.

His favorite time in later years was every Tuesday at the Kimball Sale Barn. He really enjoyed visiting with friends and playing card games were the highlight of his days.

We will all miss his positive outlook on life and his great sense of humor.

***To Those I Love***

*When I am gone, just release me,  
let me go so I can move into my  
afterglow. You mustn't tie me down  
with your tears; let's be happy that  
we had so many years. I gave you  
my love, you can only guess how  
much you gave me in happiness. I  
thank you for the love you each have  
shown, but now it's time I traveled  
on alone. So grieve for me awhile, if  
grieve you must, then let your grief  
be comforted with trust. It's only for  
a while that we must part, so bless  
the memories within your heart. And  
then, when you must come this way  
alone, I'll greet you with a smile  
and a "Welcome Home."*

 **Benda Ranch**   
**Simm-Angus & Simmentals**  
**Annual Production Sale**

Dear Cattlemen:

Welcome to our annual bull sale. This year begins our 39th year of producing Simmental Genetics. Our bulls were weaned the 1st week of September and have been fed a high roughage ration with enough energy added to allow us to see what they are capable of doing without affecting future usefulness. We have had many customers comment on the longevity that our bulls give them. The bulls have been gaining 4 lbs/day on average. The 90 day ADG period began a month after they were weaned. The bulls were started slowly and brought up to a 48 meg/cal ration that they have remained on to sale day. Herd health has been excellent as we have not treated a calf for anything since weaning.

The offering include a nice variety of bulls sired by some of the top A.I. bulls available today along with our own powerful herd bulls.

All the bulls are polled and black with 6 solid reds also in the offering.

All bulls are guaranteed through the first breeding season (90 days from turnout)

The bred females come from the heart of our replacement pen. Several are AI Bred and most are bred to the \$8500 Hart Final Answer 0038 bull. His first crop has exceeded our expectations with outstanding calving ease, along with excellent growth and eye appeal.

We do ask that all bred heifers be taken home with the purchaser sale day as many will be very close to calving. We will have Ultra-sound data posted on our web site and at edjecattle.com in late January. Videos will also be online about the same time.

We will again winter the bulls free of charge until April 15 and semen test at no charge. If you want to take your bulls home sale day we will take \$100 off of the sale price. Stop by the ranch anytime to see the bulls and heifers and visit about how we can help your program.

Thanks,

**Benda Ranch Simmentals**

Jim, Sue, Jay, Lauren & Ryan Benda  
26106 366th Ave. • Kimball, SD 57355

Phone: (605) 778-6703

Cells: (605) 730-6703 (Jim) (605) 730-0215 (Jay)

email: bendaranch@midstatesd.net

www.bendaranch.com

**Schedule:**

Sunday, February 10 Cattle on display  
 Monday, February 11 8:00 A.M. Cattle on display  
 11:00 A.M. Complimentary Lunch  
 1:00 P.M. Benda Ranch Sale

**Sale Staff:**

Luke Keller, The Register .....406-599-2394  
 Jeff Kapperman, The Neighbor .....605-940-5104  
 Jim Scheel, Cattle Business Weekly .....605-545-1521  
 Wayne Tupper, Kimball Livestock Auction .....605-778-6211  
 Eddie Houska, Kimball Livestock Auction .....605-734-5633  
 Dick Deffenbaugh .....605-680-1324

**Auctioneer:**

Justin Tupper .....605-680-0259

**Motel Accommodations:**

Dakota Winds Motel .....605-778-6215 or 1-888-751-1265  
 Super 8 .....605-778-6088

**EPDs:**

Please note these EPDs may change from the time the sale catalog is printed until registration papers are transferred.

**Announcements:**

Announcements made sale day take precedence over printed material in the sale catalog. Anyone attending this sale attends at their own risk. Benda Ranch and sale force will not be held responsible for any personal injury while attending this sale.

**Terms of Sale:**

Terms of sale are cash and the new owner is responsible for the bulls following the sale. Please let the sale clerks know if you plan on hauling your bull home sale day or if you want Jim to take them home to be wintered. **Insurance forms will be available.**

**Semen:**

Benda Ranch retains 1/4 revenue sharing interest in semen sold from bulls in this sale.

**Health:**

May and Sept. Titanium 5 PHM/Pyramid 5 Presponse  
 Vision 7 Somnus

Booster at weaning and poured with Cydectin. Cow herd tested Johnes Free (Level 1). All bulls are free of genetic defects.

**Trucking:**

Benda Ranch will assist buyers in making the most economical trucking possible.

**Wintering the Bulls**

Free wintering until April 15 and semen test or \$100 off if you take them sale day. However, we will not be responsible for injury or death to the bulls.

**Feeding & Test:**

The bulls were raised with NO creep feed. They have been wintered on high roughage ration of corn silage, corn distillers, ground alfalfa-hay mix, corn and mineral supplement designed for developing bulls. Bulls were on a 90 day test for A.D.G.

**Directions to Sale Facility:**

Sale facility is located on the northeast edge of Kimball, S.D.

**Thank You**

Special thanks to Case Blom of Professional Alliance, Platte, SD for helping sponsored the lunch. See Case for your feed needs. Lunch catered by What's For Dinner (Jennifer Namanny and Jill Braun).

**This sale will be broadcast live on the internet.**



**Real time bidding & proxy bidding available.**

For questions contact Justin Dikoff at (605) 290-0635 - [jdikoff@dvauction.com](mailto:jdikoff@dvauction.com)



**Explanation of ASA's New EPD Evaluations**

Presenting Fall 2012 EPDs on a NEW BASE:

The Fall 2012 ASA Genetic Evaluation marks the first time major breeds have expressed their EPDs on a common base (i.e., the same scale). The common base was a natural evaluation of the RAAA/ASA genetic evaluation partnership. Though forming a common base will initially lead to some confusion, the boards of both organizations unanimously agreed that it was a positive step for the beef industry – a step that allows producers to directly compare genetic predictions from the largest multi-breed database in the world.

As with any progress, there is change. Breeders and commercial producers will need to adjust to the new base. Much like converting from Fahrenheit to Celsius, it may be a struggle at first, however, over time we will all grow accustomed to the new scale. For example, look at the average EPDs of purebreds shown in this table to the right.

The changes to the base does not change the evaluation of animals; it just changes the magnitude of the EPD. It has the same impact on all animals. Be sure to use the new percentile tables to develop a “feel” for the new EPD base.

	PB EPD Average Fall 2012	PB EPD Average Spring 2012
CE	7.5	7.5
BW	2.6	0.7
WW	63.9	30.8
YW	91.0	56.3
MCE	9.8	10.3
MLK	22.3	3.4
MWW	54.3	18.8
STAY	18.0	18.0
DOC	10.2	9.6
GWT	27.6	-2.9
YG	-0.26	-0.04
MARB	0.07	0.17
BF	-0.058	0.012
REA	0.59	0.19
WBSF	-0.32	-0.31
API	106	105
TI	62	62

**Purebred Simmental  
Percentile Table  
Fall 2012**

CE	BW	WW	YW	MCE	Milk	MWW	Stay	DOC	CW	YG	Marb	BF	REA	WBSF	API	TI
7.5	2.6	63.9	91.0	9.8	22.3	54.3	18.0	10.2	27.6	-0.26	.07	-.058	.59	-.32	106	62

**Hybrid Simmental  
Percentile Table  
Fall 2012**

CE	BW	WW	YW	MCE	Milk	MWW	Stay	DOC	CW	YG	Marb	BF	REA	WBSF	API	TI
9.1	1.2	58.3	87.0	7.6	22.4	51.5	11.1	23.6	-1.8	.25	-.035	.47	-.27	107	62	

# Benda Ranch

## Simm-Angus & Simmentals

### Annual Production Sale

**Selling: 20 Powerful Simmental Yearling Bulls 35 SimmAngus Composites  
25 Bred Simmental & Simm-Angus Heifers**

**Monday, February 11, 2013 1:00 P.M.**  
**Kimball Livestock Exchange Kimball, South Dakota**  
**Sale Day Phone 605-778-6211**



## BENDA RANCH HERD REFERENCE SIREs



### **WS Independence T18**

ASA# 2411358

Sire: CNS Dream On L186

Dam: Nichols Beauty G84

EPD's: 13 2 64 94 15 22 54

### **Ellingson Legacy M229 "Olie"**

ASA# 2171761

Sire: Nichols Legacy G151

Dam: Ellingson Ms. P Stock K58

EPD's: 18 -1 59 94 13 24 53

### **Sand Ranch Hand**

ASA# 2290140

Sire: Wheatland Bull 131L

Dam: Sand Lucky Charmer

EPD's: 12 -2 54 80 14 23 50

### **Hooks Shear Force 38K**

ASA# 2081939

Sire: Nichols Legacy G151

Dam: C & D Tracy

EPD's: 22 -4 56 79 14 32 60

### **GW Lucky Man 644N**

ASA# 2223338

Sire: GW Lucky Charm 665K

Dam: GW Miss 600U 964J

EPD's: 13 2 75 120 12 28 66

### **SVF/NJC Mo Better M217**

ASA# 2180592

Sire: STF Mr. Momentum H508

Dam: NJC SVF Antoinette K205

EPD's: 5 3 68 120 1 10 44

### **JBS Mr. Focus 205U**

ASA# 2453324

Sire: Mytty In Focus

Dam: JBS Miss McCallister 903M

EPD's: 18 -4 31 54 14 30 45

### **SAV Bismarck 5682**

AAA# 15109865

Sire: GAR Grid Maker

Dam: SAV Abigale 0451

EPD's: 19 -3 67 117 14 30 63

### **ASR/GLS Pacesetter U862**

ASA# 2445038

Sire: Hooks Pacesetter 8P

Dam: GLS S82

EPD's: 14 -1 58 94 15 24 53

### **LMF Moving Forward U3**

ASA# 2429130

Sire: Triple C Invasion R 47K

Dam: LMF Godivas Beauty Stroke

EPD's: 6 3 56 96 10 24 52

### **Hart Final Answer 0038**

AAA# 16760844

Sire: SAV Final Answer 0035

Dam: Hart Mariah 8407

EPD's: 17 -2 68 113 12 25 58

### **KS Black Diamond W992**

ASA# 2505594

Sire: Wheatland Bull 6805

Dam: KS Kayla J497

EPD's: 4 5 70 115 3 24 59

### **JBS Mr. Magnitude 132W**

ASA# 2501033

Sire: OCC Magnitude 805M

Dam: JBS Mis Wrap It 715L

EPD's: 11 -1 60 90 10 16 46

## Hart Final Answer 0038

ASA# 16760844

Polled PB



### Sire of Several Lots

Sitz Traveler 8189

S A V Final Answer 0035

S A V Emulous 8145

Hart Precision 5913

Hart Mariah 8407

Hart Mariah 5332

EPDs	CE	BW	WW	YW	MCE	MM	MWW
	15	-1	34	55	14	-5	12

A son of a first calf heifer, he ranks in the top 3% for CED and WW as well as top 5% for BW. His dam puts meat on the bones ranking in the top 4% for WW and YW. Recommended for heifers.

## ASR/GLS Pacesetter U862

ASA# 2445038

Polled PB



### Sire of Several Lots

Hooks Pacesetter 8P

GLS S82

EPDs	CE	BW	WW	YW	MCE	MM	MWW
	13	-3	27	59	15	6	20

Purchased as the high selling bull in the Altenburg sale in Colorado. One of the thickest and deepest bodied bulls we have used. Sires soft made moderate framed cattle.



## JBS Mr. HF Answer 067Z

BD: 3-8-12 Black, Polled, 3/8 Simm

Reg. #2657986

Act. BW: 95 lbs. Adj. 205 Wt: 777

WW Ratio: 117

1/10/13 Wt: 1165 lbs. 90 Day ADG: 4.5

SC: 41

SAV Final Answer 0035

Hart Final Answer

Hart Mariah 8407

WS Independence T18

JBS Miss Indy 819X

JBS Miss G Design 836U

EPDs	CE	BW	WW	YW	MCE	MM	MWW
	12.9	2.3	71.1	105.5	10.0	19.3	54.8

Dam: 1 calf/117 WWR

One of the most complete Simm-Angus bulls we have raised. We knew his 1st calf heifer mamma was good, but this calf exceeded all our expectations. His style, balance and 117 weaning ratio pretty much says it all. Ranked #3 of 95 at weaning and hasn't stopped. Was a display bull at the Platte Bull Expo. Many of the breds in this sale are bred to the sire of this calf.

## WS Independence T18

ASA# 2411358

Polled PB



### Sire of Several Lots

Nichols Legacy G151

CNS Dream On L186

CNS Sheeza Dream K107W

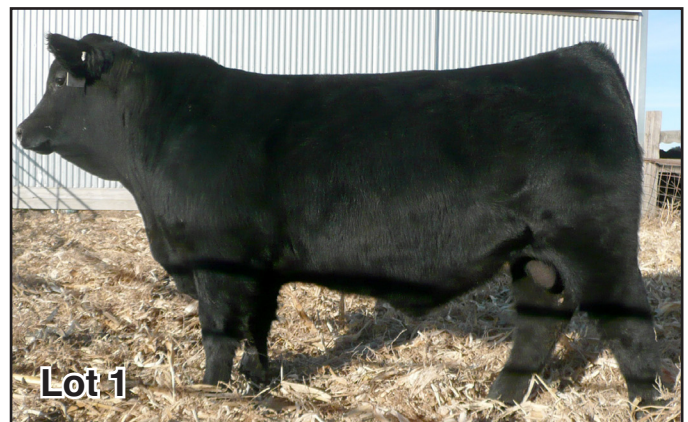
Nichols Blk Destiny D12

Nichols Beauty G84

Nichols Beauty D93

EPDs	CE	BW	WW	YW	MCE	MM	MWW
	10	0	34	59	8	0	17

Independence is as wide as a truck, smooth made and structurally correct. This bull has been admired by everyone who has seen him, and he is a bull that will put money in the bank.



Lot 1

**2**

## JBS Mr. Force 407Z

BD: 3-27-12 Black, Polled, Purebred Reg. #2658022  
 Act. BW: 96 lbs. Adj. 205 Wt: 791 WW Ratio: 119  
 1/10/13 Wt: 1120 lbs. 90 Day ADG: 4.0 SC: 38

Nichols Legacy G151  
 Hooks Shear Force 38K  
 C&D Tracy  
 SAC Mr MT 73G  
 JBS Miss Mt 144P  
 JBS Miss Joker 813L

EPDs	CE	BW	WW	YW	MCE	MM	MWW
12.7	1.8	68.7	96.5	9.1	30.2	64.6	

Dam: 7 calves/111 WWR

Our #1 ratioing bull out of 95. The complete P.B. bull for the most discriminating breeder. Ratioed 119 at weaning and a maternal pedigree that can't be beat. His dam also had our #1 ratioing heifer last year. That's two #1's in a row and she ratios 111 on 7 calves. All this and he is probably the tamest bull in the pen. Maternal brother sold in 2010 sale for \$4900.

**4**

## JBS Mr. Indy 828Z

BD: 3-27-12 Black, Polled, 3/4 Simm Reg. #2657949  
 Act. BW: 90 lbs. Adj. 205 Wt: 721 WW Ratio: 108  
 1/10/13 Wt: 1085 lbs. 90 Day ADG: 4.1 SC: 38

CNS Dream On L186  
 WS Independence T18  
 CNS Sheeza Sream K 107W  
 HSAF Bando 1961  
 JBS Miss Bando 630U  
 JBS Miss Venom 446S

EPDs	CE	BW	WW	YW	MCE	MM	MWW
13.9	0.6	64.3	99.5	10.6	21.6	53.8	

Dam: 3 calves/103 WWR

One of the fanciest looking bulls in this years sale. Out of our INDY herd bull that has been one of our best ever. Unfortunately this is his last group of natural calves, but we do have a good supply of semen on hand. This is this young cows 3rd bull in a row and probably her best. Her 2011 calf sold for \$5000 to Keith Mohling.

**3**

## JBS Mr. Bismarck 718Z

BD: 3-23-12 Black, Polled, 1/2 Simm Reg. #2657905  
 Act. BW: 81 lbs. Adj. 205 Wt: 709 WW Ratio: 107  
 1/10/13 Wt: 1170 lbs. 90 Day ADG: 5.0 SC: 39

GAR Grid Maker  
 SAV Bismarck 5682  
 SAV Abigale 0451  
 GW Lucky Man 644N  
 JBS Miss Lucky 413T  
 JBS Miss Mt 437P

EPDs	CE	BW	WW	YW	MCE	MM	MWW
15.2	-1.2	63.9	101.1	11.8	32.5	64.4	

Dam: 4 calves/109 WWR

I can only describe this calf as the thickest, deepest and moderate framed belly dragging bull in the sale. His dam has 4 calves at 109 WWR. Both her daughters have been retained in our herd and her 2010 bull calf sold to Tom Gorgalka, WY for \$4500. This 1/2 blood will make everyones short list.

**5**

## JBS Mr. Tanker 735Z

BD: 3-21-12 Black, Polled, Purebred Reg. #2657940  
 Act. BW: 92 lbs. Adj. 205 Wt: 707 WW Ratio: 106  
 1/10/13 Wt: 1060 lbs. 90 Day ADG: 4.0 SC: 40

Mr. NLC Superior S6018  
 TNT Tanker U263  
 TNT Miss S17  
 SRS J914 Preferred Beef  
 JBS Miss P. Beef 425T  
 JBS Miss Desperado 916P

EPDs	CE	BW	WW	YW	MCE	MM	MWW
7.5	2.3	70.9	108.1	12.7	24.2	59.7	

Dam: 4 calves/105 WWR

This P.B. Tanker is our only Tanker in the sale but one of the best. We think he is breeder material. This is his dam's first bull calf and her three heifers have all been retained in herd. She ratios 105 on four calves.





## JBS Mr. Indy 636Z

BD: 3-25-12 Black, Polled, Purebred Reg. #2657908  
 Act. BW: 91 lbs. Adj. 205 Wt: 722 WW Ratio: 109  
 1/10/13 Wt: 1110 lbs. 90 Day ADG: 4.5 SC: 33

CNS Dream On L186  
 WS Independence T18  
 Nichols Beauty G84  
 SRS J914 Preferred Beef  
 JBS Miss P Beef 149S  
 JBS Miss Joker 707L

EPDs	CE	BW	WW	YW	MCE	MM	MWW
10.6	1.6	64.9	93.3	12.9	23.7	56.2	

Dam: 4 calves/108 WWR

This young cow finally had the bull calf we were hoping for after three heifer calves. This guy is deep, stout and heavy muscled. He ratioed 109 and 15/95 at weaning. Dam has 108 ratio on four calves.



Lot 6



## JBS Mr. Dream On 036Z

BD: 2-22-12 Black, Polled, 3/4 Simm Reg. #2657968  
 Act. BW: 90 lbs. Adj. 205 Wt: 693 WW Ratio: 104  
 1/10/13 Wt: 1115 lbs. 90 Day ADG: 4.4 SC: 37

Nichols Legacy G151  
 CNS Dream On L186  
 CNS Sheeza Dream K107W  
 SAV Pioneer 7301  
 JBS Miss Pioneer 805X  
 JBS Miss Ranch Hand 943U

EPDs	CE	BW	WW	YW	MCE	MM	MWW
13.4	1.4	67.6	100.4	12.4	19.3	53.1	

Dam: 1 calf/104 WWR

This is our only direct son of Dream On this year and he is a good one. The Dream On semen is about all gone so there won't be to many more available. We really like his Pioneer dam and are using more in our program. Ratioed 104 at weaning.



Lot 8



## JBS Mr. Answer 030Z

BD: 2-23-12 Black, Polled, 1/2 Simm Reg. #2657896  
 Act. BW: 95 lbs. Adj. 205 Wt: 763 WW Ratio: 115  
 1/10/13 Wt: 1195 lbs. 90 Day ADG: 4.6 SC: 40

Sitz Traveler 8180  
 SAV Final Answer 0035  
 SAV Emulous 8145  
 SVF/NJC Built Right N48  
 JBS Miss Builright 221X  
 JBS Miss Desperado 67M

EPDs	CE	BW	WW	YW	MCE	MM	MWW
15.6	0.2	77.0	117.0	10.9	20.2	58.7	

Dam: 1 calf/115 WWR

Powerful growth in this 1/2 blood out of the famous Final Answer bull. His first calf momma did an outstanding job with a 115WWR and #4 out of 95 on this young prospect.



Lot 7



## JBS Mr. L Distance 065Z

BD: 2-25-2012 Black, Polled, 3/8 Simm Reg. #2681003  
 Act. BW: 78lbs. Adj. 205 Wt: 709 WW Ratio: 107  
 1/10/13 Wt: 1090 lbs. 90 Day ADG: 4.0 SC: 36

Mohnen Brushpopper 295  
 Mohnen Longdistance 1639  
 Baldrige Blackbird M565  
 WS Independence T18  
 JBS Miss Indy 849X  
 JBS Miss Bushwacker 301U

EPDs	CE	BW	WW	YW	MCE	MM	MWW
15.0	-0.4	64.2	106.1	8.9	25.3	57.4	

Dam: 1 calf/107 WWR

A really attractive low percentage son of Mohnen Long Distance. A real standout since birth and ratioed 107 and 18/95 at weaning.



Lot 9

**10****JBS Mr. Diamond 421Z**

BD: 3-24-12 Black, Polled, Purebred Reg. #2657990  
 Act. BW: 97 lbs. Adj. 205 Wt: 738 WW Ratio: 111  
 1/10/13 Wt: 1110 lbs. 90 Day ADG: 4.2 SC: 33

Wheatland Bull 680S  
 KS Black Diamond W992  
 KS Kayla J497  
 BF 0K34 Daytona  
 JBS Miss Daytona 639P  
 JBS Miss Arapa 639

EPDs	CE	BW	WW	YW	MCE	MM	MWW
	2.9	4.5	70.5	104.3	5.6	23.3	58.5

Dam: 7 calves/110 WWR

Attractive clean made son of Black Diamond with excellent growth of 111 WWR and 11 of 95 at weaning. A complete outcross to most of today's Simmental Sires. Dam ratios 110 on 7 calves.

**Lot 12****11****JBS Mr. Pace 720Z**

BD: 4-6-12 Black, Polled, Purebred Reg. #2657911  
 Act. BW: 86 lbs. Adj. 205 Wt: 678 WW Ratio: 102  
 1/10/13 Wt: 1030 lbs. 90 Day ADG: 4.5 SC: 35

Hooks Pacesetter 8P  
 ASR/GLS Pacesetter U862  
 GLS S82  
 3C Macho M450 BZ  
 JBS Miss Macho 149T  
 JBS Miss Joker 707L

EPDs	CE	BW	WW	YW	MCE	MM	MWW
	6.9	0.8	63.5	94.7	14.1	24.4	56.2

Dam: 4 calves/102 WWR

Really neat blaze face son of Pacesetter and a top Macho cow. Lots of style in a moderate framed herdsire prospect. Ratioed 102 at weaning and the cow has been very consistent as she ratios 102 on four calves. Maternal brother sold to Gorzalka's for \$6750 in 2012.

**Lot 11****12****JBS Mr. Olie 701Z**

BD: 3-14-12 Black, Polled, 5/8 Simm Reg. #2657912  
 Act. BW: 95 lbs. Adj. 205 Wt: 701 WW Ratio: 105  
 1/10/13 Wt: 1090 lbs. 90 Day ADG: 3.9 SC: 39

Nichols Legacy G151  
 Ellingson Legacy M229  
 Ellingson MS Pstock K58  
 B/R New Frontier 095  
 JBS Miss Frontier 501T  
 JBS Miss P Source 331R

EPDs	CE	BW	WW	YW	MCE	MM	MWW
	14.3	1.8	62.7	100.0	11.4	21.0	52.3

Dam: 4 calves/104 WWR

A pasture favorite all summer that continues to have the "look". Ratioed 105 at weaning. Dam is 104 on four calves. Maternal brother sold to Brian Leiferman in 2012 for \$3750.

**13****JBS Mr. Indy 707Z**

BD: 3-30-12 Black, Polled, 3/4 Simm Reg. #2657933  
 Act. BW: 98 lbs. Adj. 205 Wt: 758 WW Ratio: 114  
 1/10/13 Wt: 1180 lbs. 90 Day ADG: 4.8 SC: 36

CNS Dream On L186  
 WS Independence T18  
 Nichols Beauty G84  
 Bushs Grand Design  
 JBS Miss G. Design 506T  
 JBS Miss Gold Mine 301R

EPDs	CE	BW	WW	YW	MCE	MM	MWW
	13.1	2.5	71.7	99.1	11.4	19.6	55.4

Dam: 4 calves/107 WWR

Amazing growth in this young calf. Here's one that will definitely push down on the scale. In the last years sale a full sister bred heifer sold for \$5600 and a full brother for \$6500. This cow has done so much for us that we now have her as a donor cow. This calf ratioed 114 and 6/95 at weaning.

**Lot 13****14****JBS Mr. Indy 802Z**

BD: 4-13-12 Red, Polled, Purebred Reg. #2657963  
 Act. BW: 89 lbs. Adj. 205 Wt: 780 WW Ratio: 117  
 1/10/13 Wt: 1075 lbs. 90 Day ADG: 4.4 SC: 34

CNS Dream On L186  
 WS Independence T18  
 Nichols Beauty G84  
 JBS Mr L. Dice 008M  
 JBS Miss Ld 008 718U  
 JBS Miss Granite 718

EPDs	CE	BW	WW	YW	MCE	MM	MWW
	9.2	3.8	74.7	106.8	14.6	25.3	62.6

Dam: 3 calves/116 WWR

This red P.B. calf was #2 of 95 at weaning with a 117 WWR. This is the dam's third calf, all bulls, and the previous 2 have sold for \$6000 and \$4250. Oh yes, she ratios 116 on three calves. That's consistency.



15

## JBS Mr. Black Bear 846Z

BD: 3-24-12 Red, Polled, Purebred Reg. #2657897  
 Act. BW: 96 lbs. Adj. 205 Wt: 696 WW Ratio: 105  
 1/10/13 Wt: 1045 lbs. 90 Day ADG: 4.1 SC: 37

MRL Black Bear 79S  
 MRL 128W  
 MRL Miss 842S  
 CNS Dream On L186  
 JBS Miss Dream On 611U  
 JBS Miss G Design 349S

EPDs	CE	BW	WW	YW	MCE	MM	MWW
9.1	3.9	68.0	98.7	13.0	18.4	52.4	

Dam: 3 calves/100 WWR

A dark cherry red Purebred that has been a favorite all summer and fall. Ratioed 105 at weaning. Really stout and well muscled. Sire is a bull that is working well in the Ekstrum herd.



16

## JBS Mr. Indy 839Z

BD: 3-24-12 Red, Polled, Purebred Reg. #2658059  
 Act. BW: 92 lbs. Adj. 205 Wt: 671 WW Ratio: 101  
 1/10/13 Wt: 1000 lbs. 90 Day ADG: 4.0 SC: 36

CNS Dream ON L186  
 WS Independence T18  
 Nichols Beauty G84  
 Sand Ranch Hand  
 JBS Miss Ranch Hand 009U  
 JBS Miss Arapa 533K

EPDs	CE	BW	WW	YW	MCE	MM	MWW
9.8	2.5	64.0	89.8	14.0	19.4	51.4	

Dam: 3 calves/100 WWR

Another red Purebred with a ton of style that the Indy bull puts in all his calves. Maternal brother sold in 2011 sale to Chuck Faulhaber for \$5000. Really neat moderate framed package.

17

## JBS Mr. Pace 918Z

BD: 3-18-12 Red, Polled, Purebred Reg. # 2657939  
 Act. BW: 78 lbs. Adj. 205 Wt: 686 WW Ratio: 103  
 1/10/13 Wt: 1030 lbs. 90 Day ADG: 4.2 SC: 36

Hooks Pacesetter 8P  
 ASR/GLS Pacesetter U862  
 GLS S82  
 CNS Dream On L186  
 KSR 11W  
 KSR 99S

EPDs	CE	BW	WW	YW	MCE	MM	MWW
10.8	-0.7	57.7	85.6	14.4	22.8	51.7	

Dam: 2 calves/106 WWR

Red purebred that is smaller framed but put together the way I like him. He ratioed 103 at weaning and should be an excellent calving ease bull. A maternal brother is last years sale sold to Nathan Weiland for \$7000.



18

## JBS Mr. Big Sky 060Z

BD: 3-4-12 Red, Polled, Purebred Reg. #2658037  
 Act. BW: 82 lbs. Adj. 205 Wt: 654 WW Ratio: 98  
 1/10/13 Wt: 1020 lbs. 90 Day ADG: 4.5 SC: 36

ER Black Mack 568Y  
 ER Big Sky 545B  
 JKE 38W  
 ASR/GLS Pacesetter U862  
 JBS Miss Pace 409X  
 JBS Miss Surge 009P

EPDs	CE	BW	WW	YW	MCE	MM	MWW
13.9	-0.4	52.2	72.4	14.7	28.1	54.2	

Dam: 1 calf/ 98WWR

Red purebred sired by the old "Big Sky" bull. Dam is a beautiful red Pace Setter daughter that is one of our favorites. Should be a good calving ease bull that will sire great milking females.

19

## JBS Mr. Indy 640Z

BD: 3-27-12 Red, Polled, Purebred Reg. #2658052  
 Act. BW: 94 lbs. Adj. 205 Wt: 620 WW Ratio: 93  
 1/10/13 Wt: 940 lbs. 90 Day ADG: 3.8 SC: 34

CNS Dream On L186  
 WS Independence T18  
 Nichols Beauty G84  
 ES Dakota NK68  
 JBS Miss Dakota 86S  
 Hooks Smooth Velvet 38G

EPDs	CE	BW	WW	YW	MCE	MM	MWW
9.3	2.9	59.1	85.2	12.2	23.1	52.7	

Dam: 5 calves/100 WWR

Solid red purebred that is a little smaller than the rest, but an excellent cow family.

**20****JBS Mr. Distance 804Z**

BD: 3-16-12 Black, Polled, 1/4 Simm Reg. #2681002  
 Act. BW: 110 lbs. Adj. 205 Wt: 751 WW Ratio: 113  
 1/10/13 Wt: 1245 lbs. 90 Day ADG: 5.3 SC: 38

Mohnen Brushpopper 295  
 Mohnen Longdistance 1639  
 Baldrige Blackbird M565  
 Hart LTD 0018 4536  
 JBS Miss LTD 336U  
 JBS Miss Des 301 512N

EPDs	CE	BW	WW	YW	MCE	MM	MWW
14.8	0.9	64.9	109.3	10.2	27.6	60.1	

Dam: 1 calf/113 WWR (also a set of twins)

What a performance bull here. He is a low percentage bull but is the heaviest bull in the pen. A little more BW than most but we think he is a bull that will work on big mature cows. He ratioed 113 and 8/95 at weaning.

**23****JBS Mr. Black Bear 821Z**

BD: 3-21-12 Black, Polled, 3/4 Simm Reg. #2657892  
 Act. BW: 98 lbs. Adj. 205 Wt: 670 WW Ratio: 101  
 1/10/13 Wt: 1105 lbs. 90 Day ADG: 4.7 SC: 39

MRL Black Bear 79S  
 MRL 128W  
 MRL Miss 842S  
 OCC Magnitude 805M  
 JBS Miss Magnitude 652U  
 JBS Miss Dakota 814S

EPDs	CE	BW	WW	YW	MCE	MM	MWW
7.2	3.9	66.9	103.0	10.9	19.3	52.8	

Dam: 3 calves/100 WWR

Really smooth made bull out of the Black Bear bull. Super cow behind this bull. Maternal sister is a standout heifer that will calf this spring.

**21****JBS Mr. Chisum 904Z**

BD: 4-1-12 Black, Polled, 1/2 Simm Reg. #2657910  
 Act. BW: 89 lbs. Adj. 205 Wt: 726 WW Ratio: 109  
 1/10/13 Wt: 1060 lbs. 90 Day ADG: 4.3 SC: 35

S Alliance 3313  
 S Chisum 6175  
 S Gloria 464  
 WS Independence T18  
 JBS Miss Indy 510 W  
 JBS Miss Crossfire 704R

EPDs	CE	BW	WW	YW	MCE	MM	MWW
11.1	2.2	80.0	123.5	8.1	23.7	63.7	

Dam: 2 calves/106 WWR

Super half-blood out of the Genex bull Chisum. Ratioed 109 and 14/95 at weaning. Maternal sister sells in the bred heifer offering.

**24****JBS Mr. Forward 420Z**

BD: 3-27-12 Black, Polled, 3/4 Simm Reg. #2658053  
 Act. BW: 99 lbs. Adj. 205 Wt: 705 WW Ratio: 106  
 1/10/13 Wt: 1045 lbs. 90 Day ADG: 3.8 SC: 40

Triple C Inv Asion R47K  
 LMF Moving Forward  
 LMF Godiv as Beautystroke  
 BF 0K34 Daytona  
 JBS Miss Daytona 116P  
 JBS Miss Fame 133L

EPDs	CE	BW	WW	YW	MCE	MM	MWW
6.0	3.4	60.6	91.8	8.7	17.5	47.8	

Dam: 7 calves/96 WWR

Nice outcross bull to most of our bull customers. Definite top end bull here with 106 WWR and 22/95 at weaning.

**22****JBS Mr. Mag 637Z**

BD: 4-4-12 Black Polled, 3/4 Simm Reg. #2657909  
 Act. BW: 89 lbs. Adj. 205 Wt: 761 WW Ratio: 114  
 1/10/13 Wt: 1030 lbs. 90 Day ADG: 3.4 SC: 37

OCC Magnitude 805M  
 JBS Mr Magnitude 132W  
 JBS Miss Wrap It 715L  
 JBS Arapahoe-Gold 519P  
 JBS Miss Arapa Gold 310S  
 JBS Miss Legacy 011N

EPDs	CE	BW	WW	YW	MCE	MM	MWW
8.9	0.9	68.4	94.3	11.7	19.2	53.4	

Dam: 5 calves/105 WWR

Outstanding early growth in this calf sired by the OCC Magnitude bull we raised. Ratioed 114 and 5/95 at weaning. Maternal brother sold in last years sale for \$5000 to Dan Meier.

25

### JBS Mr. Mr Upgrade 834Z

BD: 3-21-12 Black, Polled, 3/4 Simm Reg. #2657903  
Act. BW: 85 lbs. Adj. 205 Wt: 675 WW Ratio: 101  
1/10/13 Wt: 1040 lbs. 90 Day ADG: 4.0 SC: 37

Ellingson Legacy M229  
MR NLC Upgrade U8676  
MS NLC Mojo S6119B  
SAV 8180 Traveler 004  
JBS Miss 004 120U  
JBS Miss L. Break 945L

EPDs	CE	BW	WW	YW	MCE	MM	MWW
9.7	1.3	77.0	118.5	12.3	18.6	57.1	

Dam: 3 calves/101 WWR

Our only Upgrade calf this year, but expect more next year. Ratioed 101 at weaning, dam is also 101 on three calves.



Lot 25

26

### JBS Mr. Ammo 826Z

BD: 3-24-12 Black, Polled, 3/4 Simm Reg. #2657953  
Act. BW: 96 lbs. Adj. 205 Wt: 684 WW Ratio: 103  
1/10/12 Wt: 1120 lbs. 90 Day ADG: 4.8 SC: 39

TNT Top Gun R244  
BCLR Ammo W513-1  
BCLR Miss Regan R513  
Bushs Grand Design  
JBS Miss G Design 416U  
JBS Miss Mt 919P

EPDs	CE	BW	WW	YW	MCE	MM	MWW
10.5	2.4	61.6	90.9	6.2	17.4	48.2	

Dam: 3 calves/99 WWR

Our only Ammo calf and we are very pleased with the results. Ratioed 103 at weaning. Maternal sister sells in the bred division.



Lot 26

27

### JBS Mr. Dew It Right 004Z

BD: 2-14-12 Black, Polled, 3/4 Simm Reg. #2657999  
Act. BW: 80 lbs. Adj. 205 Wt: 685 WW Ratio: 103  
1/10/13 Wt: 1030 lbs. 90 Day ADG: 3.4 SC: 37

HTP SVF In Dew Time  
Welshs Dew It Right 067T  
SVF/NJC Senerita N29  
HSAF Bando 1961  
JBS Miss Bando 229X  
JBS Miss Desperado 611M

EPDs	CE	BW	WW	YW	MCE	MM	MWW
11.9	0.0	65.7	96.6	10.5	20.0	52.8	

Dam: 1 calf/103 WWR

Excellent calving ease prospect with good growth. Ratioed 103 at weaning.



Lot 27

28

### JBS Mr. Everready 015Z

BD: 2-15-12 Black, Polled, Purebred Reg. #2657921  
Act. BW: 82 lbs. Adj. 205 Wt: 677 WW Ratio: 102  
1/10/12 Wt: 1035 lbs. 90 Day ADG: 3.7 SC: 39

HC Hummer 12M  
TNT Ever Ready R232  
RC Miss Legacy 058N  
Ellingson Legacy M229  
JBS Miss Olie 721X  
JBS Miss Frontier 356T

EPDs	CE	BW	WW	YW	MCE	MM	MWW
13.4	1.1	61.5	87.5	12.8	19.6	50.3	

Dam: 1 calf/102 WWR

Purebred son of Ever Ready with calving ease and ratioed 102 at weaning.

**29****JBS Mr. Lucky 327Z**

BD: 3-25-12 Black, polled, Purebred Reg. #2657972  
 Act. BW: 94 lbs. Adj. 205 Wt: 688 WW Ratio: 103  
 1/10/12 Wt: 1075 lbs. 90 Day ADG: 4.5 SC: 34

GW Lucky Charm 665K  
 GW Lucky Man 644N  
 GW Miss 600U 964J  
 PVF-BF-BF26 Black Joker  
 JBS Miss Joker 707N  
 JBS Miss 660U 707

EPDs	CE	BW	WW	YW	MCE	MM	MWW
8.1	3.0	3.0	71.3	107.2	12.4	24.5	60.2

Dam: 7 calves/99 WWR

Lucky Man Purebred from an excellent cow family. Ratioed 103 at weaning.

**30****JBS Mr. Focus 205 652Z**

BD: 3-23-12 Black, Polled, 3/4 Simm Reg. #2658006  
 Act. BW: 84 lbs. Adj. 205 Wt: 690 WW Ratio: 104  
 1/10/12 Wt: 1090 lbs. 90 Day ADG: 4.4 SC: 40

Mytty In Focus  
 JBS Mr Focus 205U  
 JBS Miss Mccallister 903  
 ES Dakota NK68  
 JBS Miss Dakota 814S  
 JBS Miss 600U 705

EPDs	CE	BW	WW	YW	MCE	MM	MWW
10.5	0.4	0.4	58.7	89.8	11.6	25.0	54.3

Dam: 5 calves/102 WWR

I really like this calf, dam has done an excellent job on her bull calves. Last 2 bull calves sold for \$5750 and \$4100. Ratioed 104 at weaning.

**31****JBS Mr. Diamond 913Z**

BD: 3-27-12 Black, Polled, 3/4 Simm Reg. #2657985  
 Act. BW: 96 lbs. Adj. 205 Wt: 757 WW Ratio: 114  
 1/10/12 Wt: 1080 lbs. 90 Day ADG: 4.0 SC: 35

Wheatland Bull 680S  
 KS Black Diamond W992  
 KS Kayla J497  
 WS Independence T18  
 JBS Miss Indy 616W  
 JBS Miss LTD 225S

EPDs	CE	BW	WW	YW	MCE	MM	MWW
7.3	4.2	4.2	76.0	114.5	9.8	19.9	57.9

Dam: 2 calves/104 WWR

Black Diamond calf that has performed exceptionally well. Ratioed 114 and ranked 7/95 at weaning.

**32****JBS Mr. HF Answer 003Z**

BD: 2-26-12 Black, Polled, 1/2 Simm Reg. #2657995  
 Act. BW: 78 lbs. Adj. 205 Wt: 667 WW Ratio: 100  
 1/10/13 Wt: 1085 lbs. 90 Day ADG: 4.6 SC: 37

SAV Final Answer 0035  
 Hart Final Answer  
 Hart Mariah 8407  
 ASR/GLS Pacesetter U862  
 JBS Miss Pace 720X  
 JBS Miss Macho 149T

EPDs	CE	BW	WW	YW	MCE	MM	MWW
10.8	-1.0	-1.0	57.6	89.3	11.9	23.1	51.9

Dam: 1 calf/100 WWR

Nice half-blood with excellent calving ease backed by a beautiful blaze face dam. Ratioed 100 at weaning.

**33****JBS Mr. Bismarck 815Z**

BD: 3-17-12 Black, Polled, 1/2 Simm Reg. #2658002  
 Act. BW: 78 lbs. Adj. 205 Wt: 650 WW Ratio: 98  
 1/10/13 Wt: 1055 lbs. 90 Day ADG: 4.4 SC: 37

GAR Grid Maker  
 SAV Bismarck 5682  
 SAV Abigale 0451  
 ACC1 Hustler 2N  
 JBS Miss Hustler 043U  
 JBS Miss Arapa 409K

EPDs	CE	BW	WW	YW	MCE	MM	MWW
15.3	-1.9	-1.9	58.2	85.4	13.2	27.8	56.9

Dam: 3 calves/101 WWR

I really am impressed with how well the Bismarck calves have worked for us. A smaller calf with a lot of eye appeal.

**34****JBS Mr. Bismarck 414Z**

BD: 3-29-12 Black, Polled, 1/2 Simm Reg. #2657950  
 Act. BW: 81 lbs. Adj. 205 Wt: 657 WW Ratio: 99  
 1/10/13 Wt: 1110 lbs. 90 Day ADG: 5.1 SC: 38

GAR Grid Maker  
 SAV Bismarck 5682  
 SAV Abigale 0451  
 HC Power Drive 88H  
 JBS Miss P Drive 800P  
 JBS Miss 600U 705

EPDs	CE	BW	WW	YW	MCE	MM	MWW
13.8	-0.9	-0.9	61.5	99.3	11.3	29.8	60.5

Dam: 7 calves/101 WWR

Another Bismarck that is very similar to lot 33. They would make an excellent pair of calving ease bulls and make great females.

**35****JBS Mr. Focus 205 227Z**

BD: 3-28-12 Black, Polled, 1/2 Simm Reg. #2657982  
 Act. BW: 87 lbs. Adj. 205 Wt: 696 WW Ratio: 105  
 1/10/13 Wt: 1090 lbs. 90 Day ADG: 4.4 SC: 40

Mytty In Focus  
 JBS Mr Focus 205U  
 JBS Miss Mccallister 903  
 Bushs Grand Design  
 JBS Miss Fame 043M  
 JBS Mss Arapa 409K

EPDs	CE	BW	WW	YW	MCE	MM	MWW
15.7	-1.3	-1.3	55.3	78.9	13.1	19.1	46.8

Dam: 9 calves/92 WWR

Nice half-blood with a 105 WWR. Good growth along with excellent calving ease.

**36****JBS Mr. Mag 922Z**

BD: 4-13-12 Black, Polled, 3/4 Simm Reg. #2657973  
 Act. BW: 90 lbs. Adj. 205 Wt: 744 WW Ratio: 112  
 1/10/13 Wt: 990 lbs. 90 Day ADG: 3.8 SC: 35

OCC Magnitude 805M  
 JBS Mr Magnitude 132W  
 JBS Miss Wrap It 715L  
 JF/AJE Rendition 738T  
 JBS Miss Rendition 021W  
 JBS Miss Joker 612K

EPDs	CE	BW	WW	YW	MCE	MM	MWW
6.7	2.3	72.8	104.0	8.9	17.0	53.4	

Dam: 2 calves/101 WWR

Eye catching bull that really packs the pounds into a smaller frame. Ratioed 112 and 9/95 at weaning. He must be built like a rock because he is not that big.

**37****JBS Mr. Forward 504Z**

BD: 3-15-12 Black, Polled, Purebred Reg. #2657945  
 Act. BW: 96 lbs. Adj. 205 Wt: 622 WW Ratio: 94  
 1/10/13 Wt: 980 lbs. 90 Day ADG: 3.9 SC: 38

Triple C Inv Asion R47K  
 LMF Moving Forward  
 LMF Godiv As Beautystroke  
 SS Goldmine L42  
 JBS Miss Goldmine 307R  
 JBS Miss Mt 117N

EPDs	CE	BW	WW	YW	MCE	MM	MWW
6.5	3.5	53.6	77.9	7.7	23.5	50.3	

Dam: 6 calves/102 WWR

Really like the way this calf is put together. He has grown nicely since weaning.

**38****JBS Mr. Desperado 502Z**

BD: 3-17-12 Black, Polled, Purebred Reg. #2658050  
 Act. BW: 96 lbs. Adj. 205 Wt: 687 WW Ratio: 103  
 1/10/13 Wt: 1015 lbs. 90 Day ADG: 3.6 SC: 35

PTL Cutting Edge D209  
 WHF Desperado 212G  
 WHF Adalida 12E  
 CNS Power Source 070K  
 JBS Miss P Source 341R  
 JBS Miss Mt 531N

EPDs	CE	BW	WW	YW	MCE	MM	MWW
8.1	2.9	62.9	84.3	5.7	13.6	45.1	

Dam: 5 calves/101 WWR

Out of the old Desperado bull which we used years ago. We always liked the disposition and growth, Out of a smaller but good cow family. Ratioed 103 at weaning.

**39****JBS Mr. Indy 611Z**

BD: 4-5-12 Black, Polled, 3/4 Simm Reg. #2658009  
 Act. BW: 99 lbs. Adj. 205 Wt: 660 WW Ratio: 99  
 1/10/13 Wt: 1050 lbs. 90 Day ADG: 4.5 SC: 36

CNS Dream On L186  
 WS Independence T18  
 Nichols Beauty G84  
 Bushs Grand Design  
 JBS Miss G Design 349S  
 JBS Miss Daytona 949N

EPDs	CE	BW	WW	YW	MCE	MM	MWW
11.4	3.8	67.8	96.2	10.8	19.6	53.5	

Dam: 5 calves/101 WWR

Well balanced calf that will catch your eye. His cow is one of my favorites.

**40****JBS Mr. Pace 950Z**

BD: 3-24-12 Black, Polled, 3/4 Simm Reg. #2658035  
 Act. BW: 87 lbs. Adj. 205 Wt: 660 WW Ratio: 99  
 1/10/13 Wt: 1070 lbs. 90 Day ADG: 4.8 SC: 38

Hooks Pacesetter 8P  
 ASR/GLS Pacesetter U862  
 GLS S862  
 B/R New Frontier 095  
 JBS Miss Frontier 644W  
 JBS Miss Dakota 919S

EPDs	CE	BW	WW	YW	MCE	MM	MWW
10.8	1.0	57.0	94.9	12.4	23.6	52.1	

Dam: 2 calves/97 WWR

Deep bodied, thick made bull that packs the pounds into a smaller package.

**Lot 40****41****JBS Mr. Big Sky 040Z**

BD: 3-1-12 Black, Polled, Purebred Reg. #2657948  
 Act. BW: 84 lbs. Adj. 205 Wt: 706 WW Ratio: 106  
 1/10/13 Wt: 1010 lbs. 90 Day ADG: 3.6 SC: 35

ER Black Mack 568Y  
 ER Big Sky 545B  
 JKE 38W  
 Sand Ranch Hand  
 JBS Miss Ranch Hand 812X  
 JBS Miss Dream On 418U

EPDs	CE	BW	WW	YW	MCE	MM	MWW
13.4	0.4	59.7	81.3	14.5	26.4	56.3	

Dam: 1 calf/106 WWR

Unique bull here, a black Big Sky x Ranch Hand. Great calving ease and good looks. Ratioed 106 at weaning.

**Lot 41**

**42****JBS Mr. Manifest 048Z**

BD: 3-3-12 Black, Polled, Purebred Reg. #2658018  
 Act. BW: 80 lbs. Adj. 205 Wt: 669 WW Ratio: 101  
 1/10/13 Wt: 1080 lbs. 90 Day ADG: 5.0 SC: 39

Nichols Legacy M72  
 Nichols Manifest T79  
 Nichols MCM N13  
 ASR/GLS Pacesetter U862  
 JBS Miss Pace 132X  
 JBS Miss Wrap It 715L

EPDs	CE	BW	WW	YW	MCE	MM	MWW
8.5	0.9	67.1	102.7	15.6	22.8	56.3	

Dam: 1 calf/101 WWR

Our only son of Manifest. We used him on our heifers with excellent calving ease and above average growth.

**Lot 42****43****JBS Mr. Focus 205 412Z**

BD: 4-5-12 Black Polled, 3/4 Simm Reg. #2658041  
 Act. BW: 83 lbs. Adj. 205 Wt: 657 WW Ratio: 99  
 1/10/13 Wt: 980 lbs. 90 Day ADG: 3.9 SC: 37

Mytty In Focus  
 JBS Mr Focus 205U  
 JBS Miss Mccallister 903  
 SAC Mr Mt 73G  
 JBS Miss Mt 828P  
 JBS Miss 600U 828

EPDs	CE	BW	WW	YW	MCE	MM	MWW
13.5	-1.5	46.1	66.0	8.9	24.9	47.9	

Dam: 7 calves/98 WWR

In Focus son that will have calving ease along with fleshability. Smaller framed but built right.

**44****JBS Mr. Mag 923Z**

BD: 4-13-12 Black, Polled, 1/2 Simm Reg. #2658060  
 Act. BW: 94 lbs. Adj. 205 Wt: 694 WW Ratio: 104  
 1/10/12 Wt: 1005 lbs. 90 Day ADG: 4.3 SC: 34

OCC Magnitude 805M  
 JBS Mr Magnitude 132W  
 JBS Miss Wrap It 715L  
 Varilek Bushwhacker 4135  
 JBS Miss Bushwacker 462W  
 JBS Miss 908 707P

EPDs	CE	BW	WW	YW	MCE	MM	MWW
8.1	2.6	65.5	99.4	9.6	16.4	49.2	

Dam: 2 calves/96 WWR

Magnitude son with excellent growth. Ratioed 104 at weaning.

**45****JBS Mr. Indy 36Z**

BD: 3-30-12 Black, Polled, Purebred Reg. #2657942  
 Act. BW: 97 lbs. Adj. 205 Wt: 698 WW Ratio: 105  
 1/10/13 Wt: 1095 lbs. 90 Day ADG: 4.3 SC: 40

CNS Dream On L186  
 WS Independence T18  
 Nichols Beauty G84  
 SRS J914 Preferred Beef  
 KSR 36S  
 KSR 18K

EPDs	CE	BW	WW	YW	MCE	MM	MWW
9.2	3.3	64.6	94.1	12.7	16.3	48.6	

Dam: 5 calves/96 WWR

Big time growth in this Indy Purebred. Ratioed 105 at weaning.

**46****JBS Mr. Pace 416Z**

BD: 4-2-12 Black, Polled, Purebred Reg. #2658010  
 Act. BW: 84 lbs. Adj. 205 Wt: 678 WW Ratio: 102  
 1/10/13 Wt: 985 lbs. 90 Day ADG: 3.8 SC: 36

Hooks Pacesetter 8P  
 ASR/GLS Pacesetter U862  
 GLS S82  
 SAC Mr Mt 73G  
 JBS Miss Mt 919P  
 JBS Miss 600U 418J

EPDs	CE	BW	WW	YW	MCE	MM	MWW
12.0	-0.8	54.6	80.8	8.9	24.1	51.4	

Dam: 7 calves/97 WWR

Stout made well muscled Pacesetter son. Ratioed 102 at weaning.

**47****JBS Mr. Indy 831Z**

BD: 4-9-12 Black, Polled, 3/4 Purebred Reg. #2658028  
 Act. BW: 96 lbs. Adj. 205 Wt: 681 WW Ratio: 102  
 1/10/13 Wt: 990 lbs. 90 Day ADG: 4.1 SC: 37

CNS Dream On L186  
 WS Independence T18  
 Nichols Beauty G84  
 3C Macho M450 BZ  
 JBS Miss Macho 637U  
 JBS Miss Arapa 637

EPDs	CE	BW	WW	YW	MCE	MM	MWW
8.0	3.4	66.2	90.3	12.2	19.9	53.0	

Dam: 2 calves/98 WWR

Really attractive Indy x Macho purebred. Ratioed 102 at weaning.

**48****JBS Mr. Indy 216Z**

BD: 3-24-12 Black, Polled, 3/4 Simm Reg. #2658051  
 Act. BW: 89 lbs. Adj. 205 Wt: 656 WW Ratio: 99  
 1/10/13 Wt: 1005 lbs. 90 Day ADG: 3.8 SC: 37

CNS Dream On L186  
 WS Independence T18  
 Nichols Beauty G84  
 SAF Fame  
 JBS Miss Fame 834M  
 JBS Miss Arapahoe 834

EPDs	CE	BW	WW	YW	MCE	MM	MWW
	11.4	1.1	62.2	88.8	13.7	15.3	46.4

Dam: 8 calves/93 WWR

Solid made Indy calf out of a good half-blood Fame cow.

**49****JBS Mr. Mag 947Z**

BD: 4-10-12 Black, Polled, 5/8 Simm Reg. #2658036  
 Act. BW: 86 lbs. Adj. 205 Wt: 676 WW Ratio: 102  
 1/10/13 Wt: 990 lbs. 90 Day ADG: 4.3 SC: 33

OCC Magnitude 805M  
 JBS Mr Magnitude 132W  
 JBS Miss Wrap It 715L  
 JBS Mr LTD 314T  
 JBS Miss Ltd 031W  
 JBS Miss Headstart 801K

EPDs	CE	BW	WW	YW	MCE	MM	MWW
	10.5	1.4	53.5	78.0	12.3	23.6	50.3

Dam: 2 calves/98 WWR

Another Magnitude that grew well. Ratioed 102 at weaning.

**50****JBS Mr. HF Answer 001Z**

BD: 2-29-12 Black, Polled, 1/2 Simm Reg. #2658034  
 Act. BW: 76 lbs. Adj. 205 Wt: 613 WW Ratio: 92  
 1/10/13 Wt: 1000 lbs. 90 Day ADG: 4.4 SC: 36

SAV Final Answer 0035  
 Hart Final Answer  
 Hart Mariah 8407  
 WS Independence T18  
 JBS Miss Indy 636X  
 JBS Miss P Beef 149S

EPDs	CE	BW	WW	YW	MCE	MM	MWW
	12.7	-1.5	50.2	77.2	11.1	24.6	49.7

Dam: 1 calf/92 WWR

This 1/2 blood Answer calf has really come on strong since weaning. Excellent cow family and top calving ease.

**51****JBS Mr. Ranchhand 007Z**

BD: 2-19-12 Black, Polled, Purebred Reg. #2657943  
 Act. BW: 80 lbs. Adj. 205 Wt: 610 WW Ratio: 92  
 1/10/13 Wt: 1020 lbs. 90 Day ADG: 4.5 SC: 35

Wheatland Bull 131L  
 Sand Ranch Hand  
 Sand Lucky Charming  
 WS Independence T18  
 JBS Miss Indy 826X  
 JBS Miss G Design 416U

EPDs	CE	BW	WW	YW	MCE	MM	MWW
	12.3	-0.5	50.4	72.8	10.8	24.4	49.6

Dam: 1 calf/92 WWR

Attractive Ranch Hand calf. We used Ranch Hand strictly on heifers and never had any problems.

**55****JBS Miss Indy 928Y**

BD: 3-7-11 Black, Polled, Purebred Reg. #2602980  
 Adj. BW: 95 lbs. Adj. 205 Wt: 640 WW Ratio: 106

CNS Dream On L186  
 WS Independence T18  
 Nichols Beauty G84  
 SRS J914 Preferred Beef  
 JBS Miss Pref. Beef 611W  
 JBS Miss G Design 349S

EPDs	CE	BW	WW	YW	MCE	MM	MWW
	7.7	1.7	37.4	66.8	4.3	0.9	19.6

Dam: 1 calf/106 WWR

Deep bodied, broody female. Bred to Hart Final Answer 0038 (ASA# 2643519). Ultrasound due Mar. 9.

**56****JBS Miss Trademark 943Y**

BD: 2-17-11 Black, Polled, 3/4 Simm Reg. #2602943  
 Adj. BW: 92 lbs. Adj. 205 Wt: 566 WW Ratio: 94

WLE Power Stroke  
 GWS Ebony's Trademark 6N  
 NJC Ebony Antoinette  
 OCC Magnitude 805M  
 JBS Miss Magnitude 446W  
 JBS Miss MT 701P

EPDs	CE	BW	WW	YW	MCE	MM	MWW
	0.0	0.8	29.3	49.5	0.0	-2.0	12.6

Dam: 2 calves/94 WWR

Fancy, clean made female. Bred to Hart Final Answer 0038 (ASA# 2643519). Ultrasound due Mar. 13.



**57****JBS Miss Focus 205 803Y**

BD: 3-13-11 Black, polled, 1/2 Simm Reg. #2602864  
 Adj. BW: 72 lbs. Adj. 205 Wt: 553 WW Ratio: 92

Mytty In Focus  
 JBS Mr Focus 205U  
 JBS Miss McCallister 903  
 OCC Magnitude 805M  
 JBS Miss Magnitude 132U  
 JBS Miss Wrap It 715L

EPDs	CE	BW	WW	YW	MCE	MM	MWW
	0.0	-3.9	15.3	39.5	0.0	3.0	10.6

Dam: 3 calves/93 WWR

Fancy, blaze face female with heifer calf. Bred to Welsh's Dew It Right (ASA# 2403649). Ultrasound due Feb. 19.

**58****JBS MissRanch Hand 927Y**

BD: 2-17-11 Black, Polled, 3/4Simm Reg. #2602830  
 Adj. BW: 88 lbs. Adj. 205 Wt: 530 WW Ratio: 88

Wheatland Bull 131L  
 Sand Ranch Hand  
 Sand Lucky Charmer  
 Remington Red Label HR  
 JBS Miss Red Label 318W  
 JBS Miss Fame 735N

EPDs	CE	BW	WW	YW	MCE	MM	MWW
	7.8	0.0	23.5	47.2	4.4	0.1	11.9

Dam: 2 calves/97 WWR

Smaller framed attractive female w/heifer calf. Bred to Welsh's Dew It Right (ASA# 2403649). Ultrasound due Feb. 19.

**59****JBS Miss Black Bear 743Y**

BD: 4-4-11 Black, Polled, 3/4 Simm Reg. #2602884  
 Adj. BW: 87 lbs. Adj. 205 Wt: 586 WW Ratio: 98

MRL Black Bear 79S  
 MRL 128W  
 MRL Miss 842S  
 Hart LTD 0018 4536  
 JBS Miss LTD 903T  
 JBS Miss Arapa 67J

EPDs	CE	BW	WW	YW	MCE	MM	MWW
	0.0	1.5	29.4	58.7	0.0	3.5	18.2

Dam: 4 calves/98 WWR

Nice growthy heifer, good cow family with heifer calf. Bred to In Dew Time (ASA# 2285555). Ultrasound due Feb. 16.

**60****JBS MissMo Better 509Y**

BD: 3-9-11 Black, Polled, Purebred Reg. #2602974  
 Adj. BW: 87 lbs. Adj. 205 Wt: 646 WW Ratio: 107

STF Mr Momentum H508  
 SVF/NJC Mo Better M217  
 NJC SVF Antoinette K205  
 Westfall Crossfire 639L  
 JBS Miss Crossfire 225R  
 JBS Miss G. Design 527M

EPDs	CE	BW	WW	YW	MCE	MM	MWW
	5.4	0.9	37.4	73.3	2.2	-4.8	13.9

Dam: 6 calves/102 WWR

Powerful larger framed Heifer w/heifer calf. Bred to SAV Bismarck 5682 (AAA# 15109865). Ultrasound due Feb. 22.

**61****JBS Miss Olie 920Y**

BD: 2-10-11 Black, Polled, Purebred Reg. #2602899  
 Adj. BW: 86 lbs. Adj. 205 Wt: 624 WW Ratio: 104

Nichols Legacy G151  
 Ellingson Legacy M229  
 Ellingson MS PStock K58  
 JF/AJE Rendition 738T  
 JBS Miss Rendition 225W  
 JBS Miss G. Design 527M

EPDs	CE	BW	WW	YW	MCE	MM	MWW
	9.7	-1.8	29.0	56.0	1.7	6.2	20.7

Dam: 2 calves/104 WWR

Traces back to one of our best cow families. Bred to Hart Final Answer 0038 (ASA# 2643519). Ultrasound due Mar. 10.

**62****JBS Miss Indy 534Y**

BD: 4-30-11 Black, Polled, 3/4 Simm Reg. #2602903  
 Adj. BW: 89 lbs. Adj. 205 Wt: 675 WW Ratio: 112

CNS Dream On L186  
 WS Independence T18  
 Nichols Beauty G84  
 JBS Mr L. Dice 008M  
 JBS Miss LD008 116R  
 JBS Miss Fame 133L

EPDs	CE	BW	WW	YW	MCE	MM	MWW
	7.8	0.5	35.8	66.0	5.9	-1.8	16.1

Dam: 4 calves/104 WWR

This heifer ratioed 112 (7 of 69). Bred to Hart Final Answer 0038 (ASA# 2643519). Ultrasound due Mar. 11.



**63**

## JBS Miss Olie 630Y

BD: 3-15-11 Black, Polled, Purebred Reg. #2602831  
 Adj. BW: 88 lbs. Adj. 205 Wt: 632 WW Ratio: 105

Nichols Legacy G151  
 Ellingson Legacy M229  
 Ellingson Ms Pstock K58  
 KSU Venom 101M  
 JBS Miss Venom 446S  
 JBS Miss Mt 701P

EPDs	CE	BW	WW	YW	MCE	MM	MWW
12.7	-0.4	26.4	52.7	2.1	4.2	17.4	

Dam: 5 calves/102 WWR

This heifer ratioed 105 (21 of 69). Bred to Hart Final Answer 0038 (ASA # 2643519). Ultrasound due Mar. 24.

**Lot 65****64**

## JBS Miss Indy 539Y

BD: 4-16-11 Black, Polled, 3/4 Simm Reg. #2602977  
 Adj. BW: 88 lbs. Adj. 205 Wt: 591 WW Ratio: 98

CNS Dream On L186  
 WS Independence T18  
 Nichols Beauty G84  
 BV&M RD Ambush 472  
 JBS Miss Ambush 713R  
 JBS Miss Granite 713

EPDs	CE	BW	WW	YW	MCE	MM	MWW
0.0	0.1	22.6	47.2	0.0	2.5	13.8	

Dam: 6 calves/100 WWR

Bred to Hart Final Answer 0038 (ASA# 2643519). Ultrasound due Mar. 27.

**Lot 64****66**

## JBS Miss Lucky Man 725Y

BD: 3-21-11 Black, Polled, Purebred Reg. #2602920  
 Adj. BW: 86 lbs. Adj. 205 Wt: 624 WW Ratio: 104

GW Lucky Charm 665K  
 GW Lucky Man 644N  
 GW Miss 600U 964J  
 JBS Mr. L. Dice 008M  
 JBS Miss LD008 810T  
 JBS Miss C339 810

EPDs	CE	BW	WW	YW	MCE	MM	MWW
7.9	0.5	36.2	72.8	6.5	4.2	22.3	

Dam: 4 calves/100 WWR

Moderate framed, big middled heifer. Bred to Hart Final Answer 0038 (ASA# 2643519). Ultrasound due Mar. 13.

**67**

## JBS Miss Mo Better 835Y

BD: 3-30-11 Black, Polled, 3/4 Simm Reg. #2602836  
 Adj. BW: 91 lbs. Adj. 205 Wt: 581 WW Ratio: 97

STF Mr. Momentum H508  
 SVF/NJC Mo Better M217  
 NJC SVF Antoinette K205  
 B/R New Frontier 095  
 JBS Miss Frontier 324U  
 JBS Miss P Drive 529N

EPDs	CE	BW	WW	YW	MCE	MM	MWW
0.0	1.4	29.4	71.2	0.0	-6.5	8.2	

Dam: 3 calves/93 WWR

Beautiful blaze face female. Bred to Hart Final Answer 0038 (ASA# 2643519). Ultrasound due April 14.

**65**

## JBS Miss Mo Better 454Y

BD: 3-27-11 Black, Polled, Purebred Reg. #2602856  
 Adj. BW: 96 lbs. Adj. 205 Wt: 612 WW Ratio: 102

STF Mr. Momentum H508  
 SVF/NJC Mo Better M217  
 NJC SVF Antoinette K205  
 JBS Mr Mccallister 908M  
 JBS Miss 908 128P  
 JBS Miss N. Moves 67L

EPDs	CE	BW	WW	YW	MCE	MM	MWW
6.2	2.3	27.3	59.1	4.0	0.0	13.6	

Dam: 7 calves/104 WWR

Performance female, great cow family. Bred to Hart Final Answer 0038 (ASA# 2643519). Ultrasound due Mar. 13.

**Lot 67**

**68**

## JBS Miss Indy 951Y

BD: 3-23-11 Black, Polled, 3/4 Simm Reg. #2602868  
 Adj. BW: 93 lbs. Adj. 205 Wt: 552 WW Ratio: 92

CNS Dream On L186  
 WS Independence T18  
 Nichols Beauty G84  
 Mohnenretailproduct 2075  
 JBS Miss Product 310W  
 JBS Miss Legacy 011N

EPDs	CE	BW	WW	YW	MCE	MM	MWW
0.0	0.3	23.1	48.2	0.0	2.9	14.5	

Dam: 2 calves/94 WWR

Bred to Hart Final Answer 0038 (ASA# 2643519). Ultrasound due April 18.

**Lot 71****69**

## JBS Miss Indy 922Y

BD: 3-13-11 Black, Polled, Purebred Reg. #2602976  
 Adj. BW: 81 lbs. Adj. 205 Wt: 532 WW Ratio: 89

CNS Dream On L186  
 WS Independence T18  
 Nichols Beauty G84  
 JF/AJE Rendition 738T  
 JBS Miss Rendition 021W  
 JBS Miss Joker612K

EPDs	CE	BW	WW	YW	MCE	MM	MWW
8.1	-0.6	25.0	46.1	4.8	6.5	19.0	

Dam: 2 calves/101 WWR

Bred to Hart Final Answer 0038 (ASA#2643519). Ultrasound due Mar. 14.

**72**

## JBS Miss Big Sky 938Y

BD: 2-14-11 Black, Polled, 3/4 Simm Reg. #2602854  
 Adj. BW: 64 lbs. Adj. 205 Wt: 556 WW Ratio:

ER Black Mack 568Y  
 ER Big Sky 545B  
 JKE 38W  
 Varilek Bushwhacker 4135  
 JBS Miss Buchwacker 931W  
 JBS Miss Arapa 522J

EPDs	CE	BW	WW	YW	MCE	MM	MWW
0.0	-1.0	26.9	51.0	0.0	4.9	18.4	

Dam: 3 calves/100 WWR

Black Big Sky born a twin. We are keeping one. Bred to Hart Final Answer 0038 (ASA# 2643519). Ultrasound due Mar. 9.

**70**

## JBS Miss Indy 823Y

BD: 4-14-11 Black, Polled, 3/4 Simm Reg. #2602907  
 Adj. BW: 87 lbs. Adj. 205 Wt: 557 WW Ratio: 93

CNS Dream On L186  
 WS Independence T18  
 Nichols Beauty G84  
 Myty In Focus  
 JBS Miss Focus 236U  
 JBS Miss Wally 816M

EPDs	CE	BW	WW	YW	MCE	MM	MWW
0.0	0.1	34.9	63.4	0.0	-2.0	15.5	

Dam: 3 calves/94 WWR

Bred to Hart Final Answer 0038 (ASA # 2643519). Ultrasound due Mar. 23.

**73**

## JBS Miss Pace 327Y

BD: 3-31-11 Black, Polled, Purebred Reg. #2602952  
 Adj. BW: 90 lbs. Adj. 205 Wt: 561 WW Ratio: 93

Hooks Pacesetter 8P  
 ASR/GLS Pacesetter U862  
 GLS S82  
 PVF-BF BF 26 Black Joker  
 JBS Miss Joker 707N  
 JBS Miss 660U 707

EPDs	CE	BW	WW	YW	MCE	MM	MWW
10.2	-0.2	27.2	56.3	2.9	5.9	19.5	

Dam: 7 calves/99 WWR

Really nice Pacesetter daughter. Bred to Hart Final Answer 0038 (ASA# 2643519). Ultrasound due Mar. 9.

**71**

## JBS Miss Big Sky 906Y

BD: 2/10/11 Red, Polled, Purebred Reg. #2602878  
 Adj. BW: 83 lbs. Adj. 205 Wt: 628 WW Ratio: 104

ER Black Mack 568Y  
 ER Big Sky 545B  
 JKE 38W  
 WS Independence T18  
 JBS Miss Indy 922W  
 JBS Miss Arapa 423J

EPDs	CE	BW	WW	YW	MCE	MM	MWW
10.7	-1.3	26.4	43.2	4.0	6.6	19.8	

Dam: 1 calf/104 WWR

Outstanding red female by Big Sky. We should have kept this one. Bred to Hart Final Answer 00358 (ASA #2643519). Ultrasound due Mar. 7.

**Lot 73**

**74****JBS Miss Indy 950Y**BD: 3-15-11 Black, Polled, 3/4 Simm Reg. #2602983  
Adj. BW: 85 lbs. Adj. 205 Wt: 573 WW Ratio: 95CNS Dream On L186  
WS Independence T18  
Nichols Beauty G84  
B/R New Frontier 095  
JBS Miss Frontier 644W  
JBS Miss Dakota 919S

EPDs	CE	BW	WW	YW	MCE	MM	MWW
0.0	-0.1	25.3	56.3	0.0	1.4	14.0	

Dam: 2 calves/97 WWR

Nice Indy female. Bred to Hart Final Answer 0038 (ASA# 2643519).  
Ultrasound due Mar. 13.**75****JBS Miss Forward 420Y**BD: 3-13-11 Black, Polled, 3/4 Simm Reg. #2602827  
Adj. BW: 74 lbs. Adj. 205 Wt: 570 WW Ratio: 95Triple C Invasion R47K  
LMF Moving Forward  
LMF Godiv As Beautystroke  
BF 0K34 Daytona  
JBS Miss Daytona 116P  
JBS Miss Fame 133L

EPDs	CE	BW	WW	YW	MCE	MM	MWW
4.4	-0.3	22.5	47.2	-0.7	-0.5	10.8	

Dam: 7 calves/96 WWR

Bred to Hart Final Answer 0038 (ASA# 2643519). Ultrasounds due Mar. 14.

**76****JBS Miss S Force 826Y**BD: 3-24-11 Black, Polled, 3/4 Simm Reg. #2602855  
Adj. BW: 78 lbs. Adj. 205 Wt: 564 WW Ratio: 94Nichols Legacy G151  
Hooks Shear Force 38K  
C&D Tracy  
Bushs Grand Design  
JBS Miss G Design 416U  
JBS Miss Mt 919P

EPDs	CE	BW	WW	YW	MCE	MM	MWW
0.0	-3.9	18.7	37.9	0.0	9.6	19.0	

Dam: 3 calves/99 WWR

Nice smaller framed Shear Force daughter. Bred to Hart Final Answer  
0038 (ASA# 2643519). Ultrasound due Mar. 10.**77****JBS Miss Big Sky 915Y**BD: 2-19-11 Red, Polled, Purebred Reg. #2602890  
Adj. BW: 85 lbs. Adj. 205 Wt: 570 WW Ratio: 95ER Black Mack 568Y  
ER Big Sky 545B  
JKE 38W  
CNS Dream On L186  
JBS Miss Dream On 749W  
JBS Miss Hustler 452T

EPDs	CE	BW	WW	YW	MCE	MM	MWW
11.8	-1.2	27.3	44.3	5.9	3.7	17.4	

Dam: 2 calves/98 WWR

Another nice Red Big Sky daughter, with heifer calf. Bred to Hooks Shear  
Fource (ASA #2081939). Ultrasound due Feb. 19.**78****JBS Miss Indy 715Y**BD: 4-13-11 Black, Polled, Purebred Reg. #2602984  
Adj. BW: 84 lbs. Adj. 205 Wt: 605 WW Ratio: 101CNS Dream On L186  
WS Independence T18  
Nichols Beauty G84  
JBS Mr. L. Dice 008M  
JBS Miss LD 008 337T  
JBS Miss P. Drivre 637N

EPDs	CE	BW	WW	YW	MCE	MM	MWW
9.0	-0.5	30.5	59.0	6.5	3.6	18.9	

Dam: 4 calves/103 WWR

AI bred to our Pacesetter bull with bull calf. Bred to ASR/GLS Pacesetter  
(ASA #2445038). Ultrasound due Feb. 16.**79****JBS Miss Forward 611Y**BD: 4-3-11 Black, Polled, 3/4 Simm Reg. #2602849  
Adj. BW: 89 lbs. Adj. 205 Wt: 528 WW Ratio: 88Triple C Inv Asion R47K  
LMF Movin Forward  
LMF Godiv As Beautystroke  
Bushs Grand Design  
JBS Miss G Design 349S  
JBS Miss Daytona 949N

EPDs	CE	BW	WW	YW	MCE	MM	MWW
0.0	1.4	26.9	55.7	0.0	4.8	18.3	

Dam: 5 calves/101 WWR

Small framed Heifer from good cow family. Bred to Hart Final Answer  
0038 (ASA# 2643519). Ultrasound due Mar. 25.**80****JBS Miss Indy 721Y**BD: 4-16-11 Black, Polled, 3/4 Simm Reg. #2602959  
Adj. BW: 84 lbs. Adj. 205 Wt: 571 WW Ratio: 95CNS Dream On L186  
WS Independence T18  
Nichols Beauty G84  
B/R New Frontier 095  
JBS Miss Frontier 356T  
JBS Miss Craftsman 108N

EPDs	CE	BW	WW	YW	MCE	MM	MWW
0.0	-0.7	24.9	52.1	0.0	1.7	14.1	

Dam: 4 calves/96 WWR

Bred to Hart Final Answer 0038 (ASA# 2643519). Ultrasound due Mar. 27.

**81**

## JBS Miss Ranch Hand 904Y

BD: 2-13-11 Black, Polled, Purebred Reg. #2602968  
 Adj. BW: 91 lbs. Adj. 205 Wt: 611 WW Ratio: 102

Wheatland Bull 131L  
 Sand Ranch Hand  
 Sand Lucky Chарmer  
 WS Independence T18  
 JBS Miss Indy 510W  
 JBS Miss Crossfire 704R

EPDs	CE	BW	WW	YW	MCE	MM	MWW
11.8	0.2	34.4	63.0	6.0	1.0	18.2	

Dam: 2 calves/106 WWR

Top end heifer, just bred a little later. Bred to Hart Final Answer 0038 (ASA# 2643519). Ultrasound due April 28.

**82**

## JBS Miss Bismarck 0307Y

BD: 3-13-11 Black, Polled, 1/2 Simm Reg. #2602843  
 Adj. BW: 62 lbs. Adj. 205 Wt: 506 WW Ratio:

G A R Grid Maker  
 S A V Bismarck 5682  
 S A V Abigale 0451  
 SAC Mr Mt 73G  
 JBS Miss Mt 117N  
 JBS Miss Granite 727L

EPDs	CE	BW	WW	YW	MCE	MM	MWW
0.0	-1.0	27.7	58.2	0.0	8.3	22.2	

Dam: 7 calves/98 WWR

Born a twin, we kept one. Bred to Hart Final Answer 0038 (ASA# 2643519). Ultrasound due April 14.

**83**

## JBS Miss Indy 814Y

BD: 4-13-11 Black, Polled, Purebred Reg. #2602876  
 Adj. BW: 89 lbs. Adj. 205 Wt: 566 WW Ratio: 94

CNS Dream On L186  
 WS Independence T18  
 Nichols Beauty G84  
 ACC1 Hustler 2N  
 JBS Miss Hustler 922U  
 JBS Miss Arapa 423J

EPDs	CE	BW	WW	YW	MCE	MM	MWW
11.2	0.1	26.1	42.5	6.4	2.1	15.1	

Dam: 3 calves/99 WWR

Bred to Hart Final Answer 0038 (ASA# 2643519). Ultrasound due Mar. 18.

### BIG CASINO

29SM0451



JBS BIG CASINO 336Y ASA 2602861 PB SM BORN: 3/11/11

**Owned by:**

- Benda Simmentals, , SD
- ABS Global, Inc., , WI

RC CLUB KING 040R

HC HUMMER 12M

RC MISS GRIFFEY 038N

JBS MISS DES 301 512N

JBS MR DESPERADO 301K

JBS MISS 600U 512

## A Good Bet for Added Performance

### Homozygous Black and Homozygous Polled by DNA

- Touted as one of the best performance bulls to sell in 2012
- Blaze faced bull that is loaded with length, muscle and power
- Posted his own 123 WW and 113 YW ratios
- His dam has posted 7@97 BW and 7@114 WW, his 600U granddam posted 10@109 WW
- Ranks in the top 10% of the breed for growth and muscle

**Semen for sale this spring  
 through ABS-Global.**

CE	BW	WW	YW	MCE	MILK	MWW	STAY	DOC	CW	YG	MARB	BF	REA	SNR	SAPI	STI
+11.0	+2.1	+78.5	+117.8	+15.0	+22.1	+61.3	+18.4	+11.2	+42.2	-.27	+14	-.06	+.86	-.20	\$119	\$75
.33	.36	.34	.32	.26	.26	.27	.13	.13	.27	.22	.22	.31	.20	.03		

SPRING 2013 TOP 25%

Benda Ranch 2013 Ultrasound											
	Marbling		Backfat		Rib Eye						
Tattoo	IMF Adj	IMF_Rat	BF Adj	BF_Rat	REA Adj	REA_Rat	CW EPD	YG EPD	MB EPD	BF EPD	REA EPD
001Z	3.28	143	0.28	112	13.12	89	22.9	0.01	0.52	0.01	0.35
003Z	2.85	124	0.26	104	14.28	97	29.9	-0.08	0.43	0	0.63
004Z	1.71	75	0.15	60	13.98	95	26.8	-0.15	0.12	-0.06	0.34
007Z	2.84	124	0.25	100	13.76	94	13.9	-0.24	0.34	-0.03	0.67
015Z	3.48	152	0.17	68	14.1	96	22.8	-0.35	0.51	-0.07	0.84
030Z	3.14	137	0.23	92	16.53	112	41.4	-0.14	0.49	-0.03	0.71
036Z	2.07	90	0.29	116	16.61	113	33.7	-0.23	0.25	-0.02	0.97
040Z	1.99	87	0.18	72	14.44	98	17.4	-0.24	0.18	-0.06	0.51
048Z	2.25	98	0.22	88	16.07	109	35.2	-0.25	0.18	-0.03	0.96
060Z	1.77	77	0.25	100	14.39	98	11.9	-0.18	0.1	-0.02	0.56
065Z	2.53	110	0.22	88	15.56	106	33.5	-0.1	0.38	-0.02	0.6
067Z	2.6	114	0.38	152	14.65	100	45.6	0.12	0.45	0.04	0.53
216Z	2.32	101	0.25	100	14.91	101	25.9	-0.2	0.16	-0.04	0.67
227Z	2.07	90	0.29	116	12.08	82	13.6	-0.05	0.31	-0.03	0.07
327Z	1.94	85	0.21	84	15.23	104	38.6	-0.25	0.05	-0.08	0.63
36Z	2.2	96	0.31	124	14.35	98	31.6	-0.09	0.13	-0.02	0.51
407Z	2.25	98	0.2	80	14.56	99	28.5	-0.33	0.15	-0.07	0.85
412Z	2.94	128	0.21	84	13.1	89	5	-0.16	0.34	-0.05	0.17
414Z	1.4	61	0.18	72	15.09	103	29.7	-0.35	0.06	-0.08	0.86
416Z	2.44	107	0.16	64	15.46	105	16.2	-0.39	0.12	-0.06	0.94
420Z	1.96	86	0.25	100	12.96	88	30.9	-0.08	0.04	-0.04	0.34
421Z	2.58	113	0.19	76	15.91	108	37.2	-0.31	-0.01	-0.06	0.91
502Z	1.93	84	0.31	124	16.4	111	24.2	-0.32	-0.02	-0.05	0.89
504Z	1.8	79	0.25	100	12.77	87	23	-0.13	-0.1	-0.04	0.42
611Z	2.98	130	0.19	76	13.2	90	34.6	-0.18	0.38	-0.06	0.54
636Z	2.5	109	0.23	92	14.53	99	28.5	-0.19	0.17	-0.04	0.66
637Z	2.56	112	0.19	76	15.19	103	26.4	-0.2	0.06	-0.07	0.43
640Z	1.4	61	0.22	88	13.66	93	27	-0.25	-0.11	-0.06	0.66
652Z	2.69	117	0.33	132	13.69	93	22.3	-0.1	0.26	-0.02	0.38
701Z	2.09	91	0.22	88	15.55	106	34.4	-0.33	0.34	-0.08	0.86
707Z	2.43	106	0.21	84	17.11	116	32.6	-0.36	0.35	-0.06	1.02
718Z	1.93	84	0.35	140	15.79	107	30.2	-0.26	0.2	-0.04	0.9
720Z	1.48	65	0.27	108	15.32	104	27.6	-0.29	-0.07	-0.03	0.97
735Z	2.03	89	0.3	120	12.96	88	39	-0.2	0.04	-0.03	0.83
802Z	1.94	85	0.27	108	15.03	102	39.2	-0.16	-0.04	-0.03	0.71
804Z	3.03	132	0.33	132	16.08	109	40.2	0.03	0.48	0.02	0.55
815Z	2.09	91	0.3	120	16.3	111	18.9	-0.31	0.18	-0.03	0.94
821Z	2.31	101	0.27	108	13.66	93	41.3	-0.09	0.11	-0.03	0.52
826Z	2.94	128	0.31	124	13.81	94	31.4	-0.1	0.35	-0.03	0.48
828Z	2.33	102	0.37	148	17.16	117	31.6	-0.13	0.14	0.01	0.9
831Z	2.44	107	0.2	80	14.77	100	29.9	-0.23	0.14	-0.05	0.7
834Z	2.56	112	0.3	120	14.06	96	42.5	-0.05	0.34	-0.02	0.51
839Z	1.94	85	0.19	76	13.71	93	27.9	-0.22	0.01	-0.06	0.59
846Z	2.33	102	0.25	100	15.41	105	37.6	-0.2	0.24	-0.04	0.77
904Z	2.71	118	0.25	100	14.74	100	50.9	-0.06	0.22	-0.02	0.63
913Z	2.26	99	0.32	128	13.46	92	43.2	-0.03	0.08	0	0.61
918Z	1.77	77	0.22	88	16.51	112	19	-0.43	0	-0.06	1.09
922Z	2.26	99	0.27	108	15.53	106	34.3	-0.12	-0.08	-0.03	0.54
923Z	1.68	73	0.23	92	15.03	102	34.1	-0.08	-0.13	-0.05	0.32
947Z	1.78	78	0.3	120	13.78	94	18.8	-0.01	-0.15	-0.01	0.2
950Z	2.55	111	0.23	92	15.31	104	30.4	-0.28	0.4	-0.04	0.96

# **Benda Ranch Simm-Angus & Simmentals**

Jim Benda  
26106 366th Ave.  
Kimball, SD 57355



**Monday, February 11, 2013 • 1 p.m.  
Kimball Livestock Exchange • Kimball, SD**

**Please bring this catalog to the SALE.**