

# Benda Simmental Ranch

## Annual Production Sale

**Monday, February 12, 2024**

**Kimball Livestock Exchange, Kimball SD**

**[WWW.BENDARANCH.COM](http://WWW.BENDARANCH.COM)**

This sale will be broadcast live on the internet.

**DVAuction**

Broadcasting Real-Time Auctions

Real time bidding & proxy bidding available.

**Home: 605-778-6703**

**Jim's Cell: 605-730-6703**

**Jay's Cell: 605-730-0215**

**ALL VIDEO  
AUCTION**

Come early to view the  
bulls in their pens.



# **Benda Ranch** **Simmentals & SimAngus**

## **Annual Production Sale**

### ***Selling 55 Bulls***

**Monday, February 12, 2024 1:00 P.M.**

**Kimball Livestock Exchange Kimball, South Dakota**  
**Sale Day Phone 605-778-6211**

***STORM DATE: FEBRUARY 19, 2024***

Welcome all to our 2024 Production Sale!

As we start our 50th year of raising Simmental cattle, we wish to first thank all of our customers that have given us the confidence that we are raising the right kind of bulls that continue to work in all our friends' commercial herds. We have been blessed to have our bulls do well in purebred herds as well.

Over the years, we have witnessed many changes in the Simmental breed and in the cattle industry, but through it all our goal each year is to produce cattle that have a balance of calving ease, performance and maternal traits along with good deposition, that will ultimately work in anyone's herd.

The year of 2023 will be one to remember in terms of the different weather we had. After starting the year with a lot of snow, our spring and early summer turned quite dry, but by mid June, the rains came just in time to save the corn and help hay and alfalfa production, with some good moisture coming in the fall also.

Our bulls are raised similar to most commercial operations with only mama's milk and NO creep feed. The calves were weaned mid September and fed a TMR of ground hay, corn silage, corn and pelleted protein supplement. Our weaning weights are heavier this year. We believe due to the short grass early that got the calves off to a good start, and then the greener lush grass came later when they were able to utilize it better.

Our entire cow herd is enrolled in the ASA's Total Herd Enrollment (THE) giving us accurate complete ratios for all measurable traits. All the bulls in our sale are polled and most are homozygous for polled and black either by test or by pedigree. Many were tested for those results and are noted in the footnotes. Once again we will have videos of the bulls on our website and on the DVAuction site late January.

Feel free to give us a call anytime or to stop by the ranch prior to the sale to evaluate the bulls. Hope to see you Feb. 12 in Kimball!!



Back: Ryan, Jay, Jim, Sue, Joey  
Front: Andrea with Braxton, Riley, Peyton, Lauren with William

## Schedule:

Sunday, Feb. 11 Cattle on display  
Monday, Feb. 12 8:00 A.M. Cattle on display  
11:30 A.M. Complimentary Lunch  
1:00 P.M. Benda Ranch Sale

## Sale Staff:

Curt Westland, Tri-State Livestock News ..... 605-210-3329  
Jeff Kapperman, Tri-State Neighbor ..... 605-940-5104  
Jesse Struck, Cattle Business Weekly ..... 605-201-1922  
Chad Heezen, Kimball Livestock Auction..... 605-870-0697  
Wade Christensen, Kimball Livestock Auction ..... 605-730-1801  
Dick Deffenbaugh, Kimball Livestock Auction ... 605-680-1324  
Justin Dikoff, DVAuction ..... 605-290-0635  
Wayne Tupper ..... 605-680-1000

## Auctioneer:

Justin Tupper ..... 605-680-0259

## Motel Accommodations:

Dakota Winds Motel .. 605-778-6215 or 1-888-751-1265  
Westwood Inn & Suites ..... 605-778-6088

## EPDs:

Please note these EPDs will update frequently. To look up current EPD's, click on the Animal Search tab on [www.simmental.org](http://www.simmental.org) and type in their registration # in the search box.

## Announcements:

Announcements made sale day take precedence over printed material in the sale catalog. Anyone attending this sale attends at their own risk. Benda Ranch and sale force will not be held responsible for any personal injury while attending this sale.

## Terms of Sale:

Terms of sale are cash and the new owner is responsible for the bulls following the sale. Please let the sale clerks know if you plan on hauling your bull home sale day or if you want Jim to take them home to be wintered.

## Semen:

Benda Ranch retains 1/3 revenue sharing interest in semen sold from bulls in this sale.

## Health:

May Bovi-Gold One Shot Combo  
Vision 7 Somnus  
Sept Bovi Gold One Shot Combo  
Vision 7/Somnus

Booster at weaning and poured with Cydectin, Clean Up, and dewormed with Safe-Guard. All bulls are free of genetic defects.

## Trucking:

Benda Ranch will assist buyers in making the most economical trucking possible.

## Wintering the Bulls:

Free wintering until April 15 and semen test or \$150 off if you take them sale day. However, we will not be responsible for injury or death to the bulls.

## Feeding & Test:

The bulls have been wintered on a high roughage ration of corn silage, ground hay, corn, pelleted protein supplement. Bulls were on a 93 day test for ADG.

## Guarantee:

All bulls are guaranteed through the first breeding season (90 days after turn out.) We strongly encourage you to purchase accident, sickness and disease (ASD) infertility insurance. We will pay half the price of insurance on one bull per customer. If an injury to a bull is not covered under insurance during this 90 day period, we will attempt to provide a suitable replacement bull. If one of equal value cannot be provided, we will issue a sale credit to be used in a future sale. This credit will be equal to the purchase price minus the salvage value of the animal. Please contact us as soon as possible after a condition is observed that prevents the bull from being able to function as a breeder, and before he is sold.

**Insurance forms will be available from Ray Trudeau of Martin-Trudeau Insurance Company. (605-996-3106) Mitchell, SD.**

## Directions to Sale Facility:

Sale facility is located on the northeast edge of Kimball, S.D.

## Thank You:

Special thanks to Rudy Niewenhuis, Case Blom, and Leroy Blom of Professional Alliance, Platte, SD for helping sponsor and serving the lunch.



**P.O. Box 188  
Platte, SD 57369  
Office: 605-337-9792**

**Catalog  
design and  
printing by:**



## SPECIAL HEIFER LOT

With 50 years in the record book we decided it's time to do a first ever pick of our open heifers. With a high percentage of heifers born in our 2023 calf crop, we are confident you will find an elite future cow or donor. With over 100 females to choose from it should be a fun and exciting decision. All the heifers are registered and enrolled in ASA's Total Herd Enrollment program so every heifer is ratioed within the entire group. The purebreds and 3/4's are by the breed's leading A.I. sires that you see in our bull division. Also some extremely powerful half-bloods by the popular Angus bull, Growth Fund. We will have a complete list of the heifers with pedigrees and performance data, etc. We know you are busy in the calving season and bull sales so we will give the purchaser until April 1 to make their selection or anytime sooner if they wish. For long time breeders or for those just starting in the business, it's a great opportunity.





# BENDA RANCH HERD REFERENCE SIRES



## EPD'S as of 1-2-24

| NAME                     | BREED                    | CE   | BW   | WW    | YW    | MCE  | MM   | MWW  | API   | TI    | REGISTRATION |
|--------------------------|--------------------------|------|------|-------|-------|------|------|------|-------|-------|--------------|
| Hook's Eagle 6E          | 3/4 Simm, 1/4 AN         | 14.4 | -2.1 | 98.9  | 154.4 | 4.8  | 21.3 | 70.6 | 168.1 | 104.2 | 3253742      |
| OMF EPIC E27             | PB Simm                  | 14.0 | -1.0 | 89.2  | 132.4 | 9.1  | 23.3 | 67.8 | 154.2 | 91.5  | 3317371      |
| CDI Major Impact 280H    | PB Simm                  | 9.3  | 3.5  | 95.2  | 144.8 | 6.4  | 23.1 | 70.6 | 121.2 | 85.2  | 3801544      |
| 3BS Earl 90G             | PB Simm                  | 8.6  | 2.4  | 95.2  | 130.9 | 3.7  | 24.8 | 72.3 | 141.8 | 88.7  | 3633422      |
| LBRS Genesis G69         | PB Simm                  | 8.0  | 3.1  | 112.5 | 173.3 | 3.7  | 27.1 | 83.2 | 183.8 | 116.2 | 3603651      |
| Deer Valley Growth Fund  | PB Angus                 | 14.2 | -0.9 | 110.9 | 194.3 | 11.9 | 32.5 | 87.5 | 134.3 | 92.1  | 3681957      |
| M&E True North 201       | PB Angus                 | 17.4 | -3.2 | 87.3  | 146.5 | 11.3 | 33.5 | 77.0 | 151.9 | 93.3  | 4131424      |
| Colorado Bridle Bit E752 | PB Simm                  | 19.8 | -3.4 | 72.1  | 103.8 | 10.7 | 37.2 | 73.1 | 161.5 | 89.3  | 3271382      |
| KRJ Dakota Made J172     | 3/4 Simm, 1/4 AN         | 12.5 | -0.4 | 72.5  | 113.8 | 4.8  | 18.6 | 54.8 | 114.3 | 72.3  | 3929093      |
| TJ Gold 274G             | PB Simm                  | 17.4 | -3.5 | 73.6  | 116.2 | 9.9  | 26.2 | 62.9 | 175.4 | 94.7  | 3582577      |
| KBHR High Road E283      | PB Simm                  | 15.9 | -1.3 | 92.6  | 144.0 | 8.6  | 24.4 | 70.7 | 174.2 | 103.2 | 3312276      |
| GW Copperhead 919G       | 1/2 SM, 5/16 AR, 3/16 AN | 14.1 | -2.1 | 83.3  | 130.8 | 10.1 | 28.2 | 69.7 | 176.7 | 102.8 | 3549340      |
| RFS Bulletproof B42      | PB Simm                  | 8.6  | 2.8  | 101.6 | 163.0 | 4.7  | 22.5 | 73.2 | 133.8 | 93.6  | 2930104      |

### 2024 Purebred Simmental Avg. EPD's

| CE   | BW  | WW   | YW    | ADG  | MCE | MM   | MWW  | STAY | CW   | YG    | MARB | BFAT  | REA  | API    | TI    |
|------|-----|------|-------|------|-----|------|------|------|------|-------|------|-------|------|--------|-------|
| 11.4 | 1.4 | 77.6 | 115.9 | 0.24 | 5.8 | 23.0 | 61.7 | 15.5 | 27.3 | -0.39 | 0.16 | -0.07 | 0.86 | 132.14 | 80.11 |

### 2024 Hybrid Simmental Avg. EPD's

| CE   | BW   | WW   | YW    | ADG  | MCE | MM   | MWW  | STAY | CW   | YG    | MARB | BFAT  | REA  | API    | TI    |
|------|------|------|-------|------|-----|------|------|------|------|-------|------|-------|------|--------|-------|
| 12.5 | 0.20 | 75.5 | 116.9 | 0.26 | 6.8 | 23.8 | 61.8 | 14.6 | 32.5 | -0.21 | 0.36 | -0.04 | 0.67 | 133.49 | 80.95 |



Buying online is as easy as 1, 2, 3...

1. Create an account at [www.dvauction.com](http://www.dvauction.com) under the "register" tab
2. Apply for bidding approval by clicking on the "details" tab at least 24 hours prior to the auction-a DV representative will notify you once you have been approved
3. Tune in for the sale and make your purchases!

After the sale, contact the sale manager or owner to arrange transportation and payment. **High speed internet** is required for successful bidding-be sure to check the lag-time monitor in the top left corner to ensure real-time broadcasts.

**Proxy Bidding**-if you can't make time to watch the sale, register a proxy bid and let our system represent your bid while you're away. Look for the "proxy bid" tab on the auction listing, and fill in your maximum bids. We'll handle the rest!

#### Having troubles?

During the auction, you can type a message to the operator at any time for assistance. Our full-time support team can also always be reached at (402) 474-5557.

1

**JBS Mr Eagle 908L**

BD: 3-9-23 Black, Polled, 5/8 Simm Reg. #4275376  
 Act. BW: 93 lbs. Adj. 205 Wt: 906 WW Ratio: 123 Adj. YW: 1475  
 1-5-24 wt: 1260 93 Day ADG: 3.6 Act. Scrotal: 37

Hook's Black Hawk 50B  
 Hook's Eagle 6E  
 Hook's Crystal 1C  
 Hart All In 6036  
 JBS Miss All In 724G  
 JBS Miss Casino 819E

| CE   | BW     | WW    | YW    | ADG   |       |
|------|--------|-------|-------|-------|-------|
| 11.1 | 1.4    | 109.1 | 170.9 | 0.39  |       |
| MCE  | MM     | MWW   | Stay  | CW    | YG    |
| 5.7  | 18.9   | 69.9  | 14.6  | 47.5  | -0.24 |
| MARB | B FAT  | REA   | API   | TI    |       |
| 0.45 | -0.038 | 0.97  | 150.9 | 101.2 |       |

Dam: 3 calves/112 WWR  
 Homo Black, Homo Polled  
 We knew this bull was special as a young calf and it just kept getting better. Our #1 WW bull with actual wt. of 926. (our heaviest ever) Ranks #1 in the breed for WW, YW, ADG and #2 for maternal WW. A docile bull that is smooth made, stylish, thick and long bodied. Dam ratios 112 on 3 calves. We think he is one of the best we have raised and we aren't sure how we could make one any better.

**Lot 1**

2

**JBS Mr Eagle 063L**

BD: 3-19-23 Black, Polled, PB Simm Reg. #4275325  
 Act. BW: 90 lbs. Adj. 205 Wt: 851 WW Ratio: 116 Adj. YW: 1450  
 1-5-24 wt: 1155 93 Day ADG: 3.8 Act. Scrotal: 37

Hook's Black Hawk 50B  
 Hook's Eagle 6E  
 Hook's Crystal 1C  
 RBS Boise B63  
 JBS Miss Boise 770H  
 JBS Miss Crimson 011E

| CE   | BW     | WW    | YW    | ADG  |       |
|------|--------|-------|-------|------|-------|
| 12.3 | 0.5    | 100.8 | 150.5 | 0.31 |       |
| MCE  | MM     | MWW   | Stay  | CW   | YG    |
| 6.8  | 20.6   | 67.8  | 15.8  | 38.5 | -0.43 |
| MARB | B FAT  | REA   | API   | TI   |       |
| 0.32 | -0.071 | 1.17  | 152.8 | 97.7 |       |

Homo Black, Homo Polled  
 We follow Lot 1 with a PB Eagle that doesn't take a back seat being the #2 WW bull this year. Extra thick made big butted bull with flawless EPD's. This guy has the look and power to be a real stud. Our 3rd heaviest bull at final wt and also the #2 ADG bull on our test.

**Lot 2**

3

**JBS Mr Eagle 051L**

BD: 3-14-23 Black, Polled, 3/4 Simm Reg. #4275461  
 Act. BW: 91 lbs. Adj. 205 Wt: 757 WW Ratio: 103 Adj. YW: 1390  
 1-5-24 wt: 1100 93 Day ADG: 4.0 Act. Scrotal: 35

Hook's Black Hawk 50B  
 Hook's Eagle 6E  
 Hook's Crystal 1C  
 Hart 094B  
 JBS Miss Final Sort 115H  
 JBS Miss Bismarck 307Y

| CE   | BW     | WW   | YW    | ADG  |       |
|------|--------|------|-------|------|-------|
| 10.8 | 1.5    | 91.7 | 142.0 | 0.31 |       |
| MCE  | MM     | MWW  | Stay  | CW   | YG    |
| 4.5  | 24.5   | 69.8 | 15.9  | 37.8 | -0.35 |
| MARB | B FAT  | REA  | API   | TI   |       |
| 0.26 | -0.058 | 1.01 | 142.7 | 89.6 |       |

Dam: 2 calves/108 WWR  
 Homo Black, Homo Polled  
 Another top notch Eagle son from a young Final Sort daughter that is ratioing 108 on her 1st 2 calves. His maternal brother was a top seller last year to Gorzalka Ranch, WY at \$9,000. This bull was the #1 ADG and one of the top Adj yearling wt bulls.

**Lot 3**

4

**JBS Mr Eagle 128L**

BD: 2-20-23 Black, Polled, PB Simm Reg. #4275397  
 Act. BW: 79 lbs. Adj. 205 Wt: 759 WW Ratio: 103 Adj. YW: 1230  
 1-5-24 wt: 1040 93 Day ADG: 3.0 Act. Scrotal: 32

Hook's Black Hawk 50B  
 Hook's Eagle 6E  
 Hook's Crystal 1C  
 WCS El Dorado 5209C  
 JBS Miss Eldorado 928J  
 JBS Miss Pref. Beef 611W

| CE   | BW     | WW   | YW    | ADG  |       |
|------|--------|------|-------|------|-------|
| 11.1 | 0.5    | 95.9 | 146.8 | 0.32 |       |
| MCE  | MM     | MWW  | Stay  | CW   | YG    |
| 4.6  | 23.6   | 71.3 | 14.9  | 44.5 | -0.41 |
| MARB | B FAT  | REA  | API   | TI   |       |
| 0.27 | -0.076 | 1.15 | 145.5 | 93.9 |       |

Really powerful PB Eagle that fits right in line with his brother. Wide bodied and deep from a 1st calf heifer. His dam was our #1 ratioing heifer in our 2021 calf crop.

5

**JBS Mr Eagle 158L**

BD: 2-17-23 Black, Polled, PB Simm Reg. #4275364  
 Act. BW: 74 lbs. Adj. 205 Wt: 731 WW Ratio: 99 Adj. YW: 1225  
 1-5-24 wt: 1020 93 Day ADG: 3.1 Act. Scrotal: 33.5

Hook's Black Hawk 50B  
 Hook's Eagle 6E  
 Hook's Crystal 1C  
 TNT Tanker U263  
 JBS Miss Tanker 88J  
 3C Crocus 6586D

| CE   | BW     | WW   | YW    | ADG  |       |
|------|--------|------|-------|------|-------|
| 12.4 | -1.0   | 91.8 | 142.7 | 0.32 |       |
| MCE  | MM     | MWW  | Stay  | CW   | YG    |
| 6.3  | 20.3   | 67.0 | 17.6  | 45.6 | -0.46 |
| MARB | B FAT  | REA  | API   | TI   |       |
| 0.20 | -0.081 | 1.28 | 150.4 | 91.7 |       |

Homo Black  
 Smooth made fancy bull that is smaller framed than his brothers but ratioed herd average with excellent EPD's. The breeds best are in his pedigree.

6

**JBS Mr Epic 560L**

BD: 3-8-23 Black, Polled, 3/4 Simm Reg. #4275419  
 Act. BW: 82 lbs. Adj. 205 Wt: 816 WW Ratio: 111 Adj. YW: 1245  
 1-5-24 wt: 1110 93 Day ADG: 2.7 Act. Scrotal: 38.5

WS All Around Z35  
 OMF Epic E27  
 OMF Time Less B100  
 Hart Final Answer  
 JBS Miss HF Answer 206C  
 JBS Miss Force 014Z

| CE   | BW     | WW   | YW    | ADG  |       |
|------|--------|------|-------|------|-------|
| 14.4 | -0.4   | 92.4 | 137.6 | 0.28 |       |
| MCE  | MM     | MWW  | Stay  | CW   | YG    |
| 8.2  | 22.7   | 67.1 | 17.5  | 33.9 | -0.16 |
| MARB | B FAT  | REA  | API   | TI   |       |
| 0.32 | -0.028 | 0.61 | 152.0 | 91.5 |       |

Dam: 7 calves/104 WWR  
 Homo Black, Homo Polled

These Epic cattle have taken the breed by storm. This bull is what I would call the show bull of this years crop. Excellent muscle expression in a neat clean package. His Final Answer dam is a beautiful top producer averaging 104 on 7 calves. 560 bull was our #8 weaning bull this fall.



Lot 6

7

**JBS Mr Epic 625L**

BD: 3-9-23 Black, Polled, 3/4 Simm Reg. #4275412  
 Act. BW: 102 lbs. Adj. 205 Wt: 795 WW Ratio: 108 Adj. YW: 1350  
 1-5-24 wt: 1155 93 Day ADG: 3.5 Act. Scrotal: 38

WS All Around Z35  
 OMF Epic E27  
 OMF Time Less B100  
 CCR Cowboy Cut 5048Z  
 JBS Ms Cowboy Cut 0616D  
 JBS Miss LTD 225S

| CE   | BW     | WW   | YW    | ADG  |       |
|------|--------|------|-------|------|-------|
| 10.6 | 2.0    | 91.7 | 135.3 | 0.27 |       |
| MCE  | MM     | MWW  | Stay  | CW   | YG    |
| 7.3  | 26.5   | 70.3 | 17.8  | 32.2 | -0.22 |
| MARB | B FAT  | REA  | API   | TI   |       |
| 0.32 | -0.041 | 0.68 | 145.4 | 89.1 |       |

Dam: 6 calves/109 WWR  
 Homo Black

A high performance Epic son ranking #12 at weaning. Really thick topped and deep bodied. His Cowboy Cut dam is ratioing 109 on 6 calves. Her 5 bulls have all been in our bull sale. This guy will add pounds to your next calf crop.



Lot 7

8

**JBS Mr Major Impact 934L**

BD: 3-3-23 Black, Polled, PB Simm Reg. #4275486  
 Act. BW: 82 lbs. Adj. 205 Wt: 801 WW Ratio: 109 Adj. YW: 1190  
 1-5-24 wt: 1055 93 Day ADG: 2.5 Act. Scrotal: 37

LCDR Impact 134F  
 CDI Major Impact 280H  
 CDI Miss Rimrock 55E  
 JBS Big Casino 336Y  
 JBS Miss Casino 564G  
 JBS Miss Pioneer 421C

| CE    | BW     | WW   | YW    | ADG  |       |
|-------|--------|------|-------|------|-------|
| 11.1  | 1.2    | 92.8 | 138.2 | 0.28 |       |
| MCE   | MM     | MWW  | Stay  | CW   | YG    |
| 5.8   | 22.9   | 68.2 | 16.0  | 43.7 | -0.43 |
| MARB  | B FAT  | REA  | API   | TI   |       |
| -0.01 | -0.077 | 1.19 | 128.9 | 83.8 |       |

Dam: 3 calves/103 WWR  
 Homo Black, Homo Polled

The Major Impacts are a new sire group for us and they didn't disappoint. This guy is very stylish and packed with meat and muscle. Ranked #10 at weaning over 800 lbs. His dam was our #2 WW heifer calf in 2019.



Lot 8

9

**JBS Mr Major Impact 930L**

BD: 3-9-23 Black, Polled, PB Simm Reg. #4275428  
 Act. BW: 98 lbs. Adj. 205 Wt: 776 WW Ratio: 105 Adj. YW: 1220  
 1-5-24 wt: 1045 93 Day ADG: 2.8 Act. Scrotal: 34

LCDR Impact 134F  
 CDI Major Impact 280H  
 CD1 Miss Rimrock 55E  
 Hook's Bozeman 8B  
 JBS Miss Bozeman 414G  
 JBS Miss Dream On 330B

| CE   | BW     | WW   | YW    | ADG  |       |
|------|--------|------|-------|------|-------|
| 9.7  | 3.1    | 88.1 | 130.4 | 0.26 |       |
| MCE  | MM     | MWW  | Stay  | CW   | YG    |
| 6.7  | 19.0   | 61.8 | 16.4  | 35.8 | -0.44 |
| MARB | B FAT  | REA  | API   | TI   |       |
| 0.18 | -0.073 | 1.16 | 133.2 | 83.0 |       |

Homo Black

A high performance bull that is almost identical to his brother the previous lot. Royal pedigree of Simmental sires. Ratioed 105 at weaning 776 lbs.

10

**JBS Mr Major Impact 523L**

BD: 3-11-23 Black, Polled, 3/4 Simm Reg. #4275452  
 Act. BW: 95 lbs. Adj. 205 Wt: 780 WW Ratio: 106 Adj. YW: 1190  
 1-5-24 wt: 1050 93 Day ADG: 2.6 Act. Scrotal: 36

LCDR Impact 134F  
 CDI Major Impact 280H  
 CD1 Miss Rimrock 55E  
 Barstow Cash  
 JBS Miss Cash 304C  
 JBS Miss Casino 910A

| CE   | BW     | WW   | YW    | ADG  |       |
|------|--------|------|-------|------|-------|
| 10.4 | 2.3    | 91.0 | 141.1 | 0.31 |       |
| MCE  | MM     | MWW  | Stay  | CW   | YG    |
| 6.8  | 15.6   | 60.0 | 14.7  | 42.0 | -0.30 |
| MARB | B FAT  | REA  | API   | TI   |       |
| 0.11 | -0.043 | 1.03 | 124.0 | 81.1 |       |

Hetero Black

A 3/4 blood Impact son that ratioed 106 at weaning 780 lbs. As you can see these Impact sons really push down on the scale.

11

## JBS Mr Colorado 143L

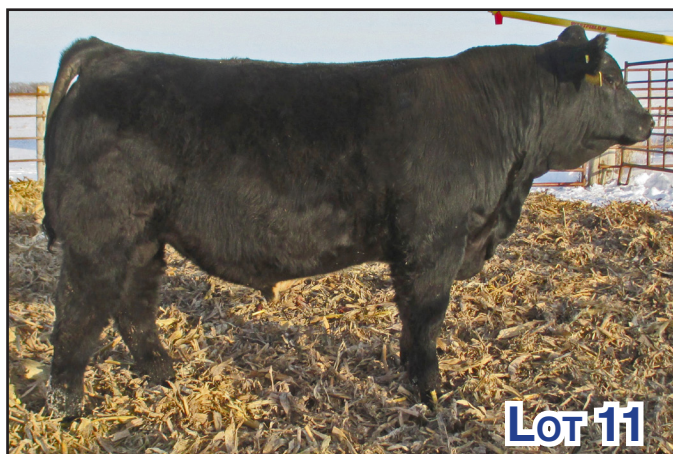
BD: 2-24-23 Black, Polled, PB Simm Reg. #4275347  
Act. BW: 76 lbs. Adj. 205 Wt: 822 WW Ratio: 112 Adj. YW: 1260  
1-5-24 wt: 1075 93 Day ADG: 2.8 Act. Scrotal: 37.5

Hook's Bozeman 8B  
Colorado Bridle Bit E752  
Bridle Bit Miss B452  
Hook's Black Hawk 50B  
JBS Miss Blackhawk 643J  
JBS Miss Sky Force 927D

| CE   | BW     | WW   | YW    | ADG  |       |
|------|--------|------|-------|------|-------|
| 15.7 | -1.2   | 90.1 | 131.3 | 0.26 |       |
| MCE  | MM     | MWW  | Stay  | CW   | YG    |
| 7.9  | 26.7   | 68.9 | 18.2  | 37.3 | -0.39 |
| MARB | B FAT  | REA  | API   | TI   |       |
| 0.27 | -0.074 | 1.02 | 155.4 | 92.0 |       |

Homo Black

Here's one of our favorites. We have always liked the Colorado cattle for their calving ease and still way above average performance. This was our #6 WW bull from a very promising 1st calf heifer that was a top ratioing calf herself. Check his EPD's, you can't do much better.



14

## JBS Mr Frontline 660L

BD: 3-19-23 Black, Polled, 3/4 Simm Reg. #4275389  
Act. BW: 90 lbs. Adj. 205 Wt: 796 WW Ratio: 108 Adj. YW: 1180  
1-5-24 wt: 1020 93 Day ADG: 2.3 Act. Scrotal: 38

CDI Mainline 265D  
Hook's Frontline 40F  
Hook's Carina 15C  
JBS Mr Crimson Tide 941B  
JBS Miss Crimson 213D  
JBS Miss Chisum 901Z

| CE   | BW     | WW   | YW    | ADG  |       |
|------|--------|------|-------|------|-------|
| 9.8  | 1.8    | 86.4 | 135.6 | 0.31 |       |
| MCE  | MM     | MWW  | Stay  | CW   | YG    |
| 5.8  | 32.2   | 73.3 | 16.0  | 39.1 | -0.24 |
| MARB | B FAT  | REA  | API   | TI   |       |
| 0.39 | -0.043 | 0.81 | 141.8 | 87.9 |       |

6 calves/110 WWR

Hetero Black

The only Frontline bull this year and full brother to last years #1 WW bull at \$8,000. Ranked #11 this year and just shy of 800 lbs. Strong maternal EPD's and the #1 bull to add milk to your herd.



12

## JBS Mr Colorado 126L

BD: 2-20-23 Black, Polled, PB Simm Reg. #4275498  
Act. BW: 65 lbs. Adj. 205 Wt: 680 WW Ratio: TW Adj. YW: 1205  
1-5-24 wt: 1060 93 Day ADG: 3.3 Act. Scrotal: 37

Hook's Bozeman 8B  
Colorado Bridle Bit E752  
Bridle Bit Miss B452  
WCS El Dorado 5209C  
JBS Miss Eldorado 806J  
JBS Miss Elevate 316F

| CE   | BW     | WW   | YW    | ADG  |       |
|------|--------|------|-------|------|-------|
| 15.6 | -1.4   | 75.6 | 112.7 | 0.23 |       |
| MCE  | MM     | MWW  | Stay  | CW   | YG    |
| 8.9  | 32.2   | 69.8 | 15.1  | 35.8 | -0.44 |
| MARB | B FAT  | REA  | API   | TI   |       |
| 0.12 | -0.099 | 0.96 | 138.4 | 81.6 |       |

This Colorado is a twin. This one was on a foster dam and weaning a little heavier. The Colorado's are making moderate framed easy keeping cows.



15

## JBS Mr Bulletproof 854L

BD: 3-20-23 Red, Polled, PB Simm Reg. #4275447  
Act. BW: 98 lbs. Adj. 205 Wt: 825 WW Ratio: 112 Adj. YW: 1300  
1-5-24 wt: 1090 93 Day ADG: 3.0 Act. Scrotal: 33

GW Redestined 642X  
RFS Bulletproof B42  
RFS Miss Z119  
JBS Mr Crimson Tide 941B  
JBS Miss Crimson 907F  
JBS Miss Indy 146W

| CE   | BW     | WW   | YW    | ADG  |       |
|------|--------|------|-------|------|-------|
| 8.2  | 3.6    | 94.9 | 147.7 | 0.33 |       |
| MCE  | MM     | MWW  | Stay  | CW   | YG    |
| 5.2  | 24.3   | 69.3 | 15.0  | 44.2 | -0.37 |
| MARB | B FAT  | REA  | API   | TI   |       |
| 0.08 | -0.081 | 0.99 | 125.7 | 84.3 |       |

Dam: 4 calves/102 WWR

Homo Polled, Non Dilutor

This Bulletproof leads off a strong group of high performance reds. 854 was our #4 WW bull and a very complete from head to tail. A dark red with meat, muscle and full deep hind quarter.



16

**JBS Mr Copperhead 752L**

BD: 3-13-23 Red, Polled, 3/4 Simm Reg. #4275301  
 Act. BW: 90 lbs. Adj. 205 Wt: 850 WW Ratio: 115 Adj. YW: 1395  
 1-5-24 wt: 1180 93 Day ADG: 3.4 Act. Scrotal: 37

|                           |      |        |      |       |      |       |
|---------------------------|------|--------|------|-------|------|-------|
| GW Movin On 183C          | CE   | BW     | WW   | YW    | ADG  |       |
| GW Copperhead 919G        | 12.4 | 0.1    | 87.3 | 132.5 | 0.28 |       |
| GW Miss Direct Drive 932E | MCE  | MM     | MWW  | Stay  | CW   | YG    |
| WS Prime Beef Z8          | 8.2  | 28.6   | 72.0 | 17.6  | 28.7 | -0.41 |
| JBS Miss Prime Beef 010E  | MARB | B FAT  | REA  | API   | TI   |       |
| JBS Miss Force 708X       | 0.62 | -0.072 | 0.99 | 167.1 | 97.8 |       |

Dam: 5 calves/110 WWR  
 Homo Polled, Non Dilutor  
 Powerhouse Copperhead 3/4 blood. Our #3 ww bull at 850 lbs. Strong maternal numbers to make great cows. Dam ratios 110 on all 5 of her bull calves that have all been sale toppers. 752 was the 2nd heaviest bull when we took final weights.



17

**JBS Mr Copperhead 751L**

BD: 3-9-23 Red, Polled, 3/4 Simm Reg. #4275470  
 Act. BW: 84 lbs. Adj. 205 Wt: 745 WW Ratio: 101 Adj. YW: 1260  
 1-5-24 wt: 1070 93 Day ADG: 3.2 Act. Scrotal: 35

|                           |      |        |      |       |      |       |
|---------------------------|------|--------|------|-------|------|-------|
| GW Movin On 183C          | CE   | BW     | WW   | YW    | ADG  |       |
| GW Copperhead 919G        | 14.0 | -0.8   | 86.3 | 132.4 | 0.29 |       |
| GW Miss Direct Drive 932E | MCE  | MM     | MWW  | Stay  | CW   | YG    |
| WS Prime Beef Z8          | 8.2  | 32.0   | 74.8 | 18.0  | 27.1 | -0.41 |
| JBS Miss Prime Beef 426E  | MARB | B FAT  | REA  | API   | TI   |       |
| JBS Miss Pace 718B        | 0.61 | -0.071 | 0.96 | 169.4 | 98.0 |       |

Dam: 5 calves/115 WWR  
 More calving ease in this eye appealing young stud. Tremendous performance in his Prime Beef dam. She has had some of our best bulls in the past sales.



18

**JBS Mr Copperhead 061L**

BD: 3-4-23 Red, Polled, 3/4 Simm Reg. #4275309  
 Act. BW: 85 lbs. Adj. 205 Wt: 710 WW Ratio: 96 Adj. YW: 1200  
 1-5-24 wt: 1000 93 Day ADG: 3.1 Act. Scrotal: 31.5

|                           |      |        |      |       |      |       |
|---------------------------|------|--------|------|-------|------|-------|
| GW Movin On 183C          | CE   | BW     | WW   | YW    | ADG  |       |
| GW Copperhead 919G        | 12.4 | -0.2   | 83.1 | 134.3 | 0.32 |       |
| GW Miss Direct Drive 932E | MCE  | MM     | MWW  | Stay  | CW   | YG    |
| RFS Bulletproof B42       | 6.8  | 29.8   | 71.8 | 17.0  | 31.9 | -0.34 |
| JBS Miss Bulletproof 325H | MARB | B FAT  | REA  | API   | TI   |       |
| JBS Miss Pace 821A        | 0.54 | -0.066 | 0.86 | 155.9 | 91.6 |       |

Dam: 2 calves/104 WWR  
 Copperhead with good calving ease and cow making potential. Maternal brother was a top seller last year to Kevin Miekley, Missouri. Cow ratios 104 on her 1st two calves.

19

**JBS Mr All American 925L**

BD: 3-18-23 Red, Polled, PB Simm Reg. #4275422  
 Act. BW: 98 lbs. Adj. 205 Wt: 778 WW Ratio: 106 Adj. YW: 1265  
 1-5-24 wt: 1040 93 Day ADG: 3.1 Act. Scrotal: 35

|                           |      |        |      |       |      |       |
|---------------------------|------|--------|------|-------|------|-------|
| WS All Aboard B80         | CE   | BW     | WW   | YW    | ADG  |       |
| KBHR All American G104    | 8.9  | 3.3    | 92.3 | 144.5 | 0.33 |       |
| KBHR C078                 | MCE  | MM     | MWW  | Stay  | CW   | YG    |
| RFS Bulletproof B42       | 6.2  | 23.7   | 68.6 | 12.7  | 34.0 | -0.50 |
| JBS Miss Bulletproof 325G | MARB | B FAT  | REA  | API   | TI   |       |
| JBS Miss Pace 821A        | 0.28 | -0.110 | 1.04 | 133.4 | 88.9 |       |

Dam: 3 calves/101 WWR  
 Big time performance in a thick made deep bodied bull. Ratioed #18 at 778 lbs.



20

**JBS Mr All American 924L**

BD: 3-14-23 Red, Polled, PB Simm Reg. #4275485  
 Act. BW: 110 lbs. Adj. 205 Wt: 795 WW Ratio: 108 Adj. YW: 1205  
 1-5-24 wt: 1025 93 Day ADG: 2.6 Act. Scrotal: 36

|                           |      |        |      |       |      |       |
|---------------------------|------|--------|------|-------|------|-------|
| WS All Aboard B80         | CE   | BW     | WW   | YW    | ADG  |       |
| KBHR All American G104    | 8.2  | 4.3    | 93.2 | 142.0 | 0.30 |       |
| KBHR C078                 | MCE  | MM     | MWW  | Stay  | CW   | YG    |
| RFS Bulletproof B42       | 6.9  | 22.7   | 67.5 | 12.8  | 29.9 | -0.55 |
| JBS Miss Bulletproof 321G | MARB | B FAT  | REA  | API   | TI   |       |
| JBS Miss Force 710A       | 0.34 | -0.113 | 1.11 | 134.4 | 89.6 |       |

Dam: 3 calves/99 WWR  
 Bred almost identical to the previous lot. Ratioed 108 at 795 lbs. Comes with more birth wt. so use on mature cows. Watch his calves push down the scale.

21

## JBS Mr Earl 652L

BD: 3-7-23 Black, Polled, PB Simm Reg. #4275396  
Act. BW: 90 lbs. Adj. 205 Wt: 789 WW Ratio: 107 Adj. YW: 1175  
1-5-24 wt: 1040 93 Day ADG: 2.4 Act. Scrotal: 37

BBS True Justice B10  
3BS Earl 90G  
3BS 3CTanker 707E  
JBS Mr Tanker 750A  
JBS Miss Tank2 929D  
JBS Miss Pref. Beef 654W

| CE   | BW     | WW   | YW    | ADG  |       |
|------|--------|------|-------|------|-------|
| 8.6  | 2.6    | 90.5 | 129.8 | 0.25 |       |
| MCE  | MM     | MWW  | Stay  | CW   | YG    |
| 5.3  | 28.2   | 72.3 | 19.1  | 38.9 | -0.39 |
| MARB | B FAT  | REA  | API   | TI   |       |
| 0.08 | -0.094 | 0.89 | 132.6 | 82.8 |       |

Dam: 6 calves/109 WWR

Homo Black

Leads off a tremendous set of 3BS Earl 90G bulls. Bull ratios 107 and 789 lbs. at weaning. Cow has 6 calves at 109. Her 3 bulls have all been in our sales. Really complete PB bull.

22

## JBS Mr Earl 627L

BD: 3-8-23 Black, Polled, PB Simm Reg. #4275363  
Act. BW: 94 lbs. Adj. 205 Wt: 771 WW Ratio: 105 Adj. YW: 1215  
1-5-24 wt: 1050 93 Day ADG: 2.8 Act. Scrotal: 38

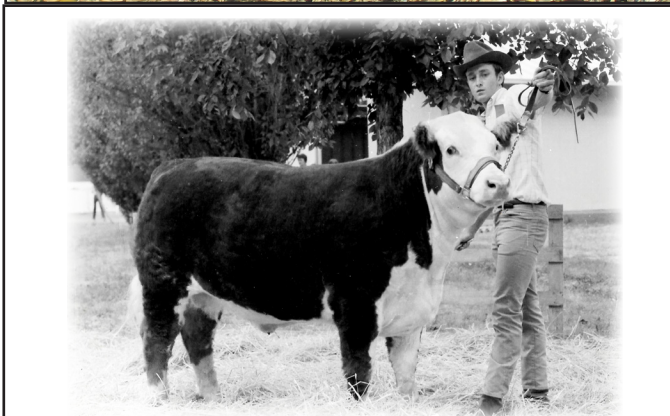
BBS True Justice B10  
3BS Earl 90G  
3BS 3CTanker 707E  
CCR Cowboy Cut 5048Z  
JBS Miss Cowboy Cut 310D  
JBS Miss Mo Better 013A

| CE   | BW     | WW   | YW    | ADG  |       |
|------|--------|------|-------|------|-------|
| 8.8  | 2.9    | 93.3 | 131.3 | 0.24 |       |
| MCE  | MM     | MWW  | Stay  | CW   | YG    |
| 4.2  | 23.3   | 69.0 | 19.8  | 34.8 | -0.40 |
| MARB | B FAT  | REA  | API   | TI   |       |
| 0.18 | -0.088 | 0.91 | 139.5 | 85.9 |       |

Dam: 6 calves/102 WWR

Homo Black

High performance like all the Earls. This is his dam's 1st bull. 3 of her heifers have sold as breds in previous sales.



Jim's Champion Steer... a LOOONG time ago!

23

## JBS Mr Earl 931L

BD: 3-16-23 Black, Polled, PB Simm Reg. #4275496  
Act. BW: 97 lbs. Adj. 205 Wt: 759 WW Ratio: 103 Adj. YW: 1300  
1-5-24 wt: 1060 93 Day ADG: 3.4 Act. Scrotal: 37

BBS True Justice B10  
3BS Earl 90G  
3BS 3CTanker 707E  
Hook's Bozeman 8B  
JBS Miss Bozeman 528G  
JBS Miss Skyforce 1804C

| CE   | BW     | WW   | YW    | ADG  |       |
|------|--------|------|-------|------|-------|
| 8.6  | 3.2    | 87.3 | 124.4 | 0.23 |       |
| MCE  | MM     | MWW  | Stay  | CW   | YG    |
| 4.8  | 24.8   | 67.6 | 18.5  | 33.5 | -0.41 |
| MARB | B FAT  | REA  | API   | TI   |       |
| 0.23 | -0.082 | 0.96 | 137.4 | 83.6 |       |

Dam: 3 calves/99 WWR

Homo Black, Homo Polled

Consistency is the best way to describe these Earl sons. This one ratios 103 and 759 lbs at weaning.



24

## JBS Mr Earl 531L

BD: 4-13-23 Black, Polled, 3/4 Simm Reg. #4275463  
Act. BW: 90 lbs. Adj. 205 Wt: 807 WW Ratio: 110 Adj. YW: 1255  
1-5-24 wt: 985 93 Day ADG: 2.8 Act. Scrotal: 36

BBS True Justice B10  
3BS Earl 90G  
3BS 3CTanker 707E  
SAV Bismarck 5682  
JBS Miss Bismarck 303C  
JBS Miss Force 113A

| CE   | BW     | WW   | YW    | ADG  |       |
|------|--------|------|-------|------|-------|
| 11.5 | 0.9    | 92.1 | 128.5 | 0.23 |       |
| MCE  | MM     | MWW  | Stay  | CW   | YG    |
| 6.0  | 22.0   | 66.1 | 19.8  | 35.5 | -0.33 |
| MARB | B FAT  | REA  | API   | TI   |       |
| 0.21 | -0.064 | 0.88 | 143.9 | 86.8 |       |

Homo Black

This is the youngest bull in the sale but you wouldn't know it looking at him. Ratioed #9 bull at 807 lb adjusted. We think he will mature into one of Earls best sons.



Lot 24

25

## JBS Mr Earl 806L

BD: 3-30-23 Black, Polled, PB Simm Reg. #4275375  
Act. BW: 92 lbs. Adj. 205 Wt: 790 WW Ratio: 107 Adj. YW: 1175  
1-5-24 wt: 970 93 Day ADG: 2.4 Act. Scrotal: 32

|                       |      |        |      |       |      |       |
|-----------------------|------|--------|------|-------|------|-------|
| BBS True Justice B10  | CE   | BW     | WW   | YW    | ADG  |       |
| 3BS Earl 90G          | 10.1 | 1.5    | 88.0 | 124.8 | 0.23 |       |
| 3BS 3CTanker 707E     | MCE  | MM     | MWW  | Stay  | CW   | YG    |
| LRS Elevate 213B      | 4.8  | 23.9   | 66.4 | 17.3  | 32.5 | -0.45 |
| JBS Miss Eevate 316F  | MARB | B FAT  | REA  | API   | TI   |       |
| JBS Miss Diamond 815A | 0.10 | -0.092 | 0.99 | 133.0 | 83.0 |       |

We are not sure which is the best Earl, but they all ratio high at weaning and keep on growing. This one ratioed 107 at 790 lbs.

26

## JBS Mr Earl 840L

BD: 4-3-23 Black, Polled, 5/8 Simm Reg. #4275444  
Act. BW: 93 lbs. Adj. 205 Wt: 762 WW Ratio: 103 Adj. YW: 1280  
1-5-24 wt: 1015 93 Day ADG: 3.3 Act. Scrotal: 37

|                         |      |        |      |       |      |       |
|-------------------------|------|--------|------|-------|------|-------|
| BBS True Justice B10    | CE   | BW     | WW   | YW    | ADG  |       |
| 3BS Earl 90G            | 10.0 | 1.5    | 85.0 | 122.9 | 0.24 |       |
| 3BS 3CTanker 707E       | MCE  | MM     | MWW  | Stay  | CW   | YG    |
| SAV Resource 1441       | 4.6  | 22.7   | 64.5 | 17.7  | 39.8 | -0.27 |
| JBS Miss Resource 920F  | MARB | B FAT  | REA  | API   | TI   |       |
| JBS Miss Rendition 225W | 0.20 | -0.058 | 0.81 | 131.4 | 80.4 |       |

Homo Black, Homo Polled  
Percentage Earl son that ratios 103 at 762 lbs. These Earls are one just like the other.

27

## JBS Mr Earl 747L

BD: 3-2-23 Black, Polled, 5/8 Simm Reg. #4275388  
Act. BW: 92 lbs. Adj. 205 Wt: 758 WW Ratio: 103 Adj. YW: 1230  
1-5-24 wt: 1090 93 Day ADG: 3.0 Act. Scrotal: 38

|                        |      |       |      |       |      |       |
|------------------------|------|-------|------|-------|------|-------|
| BBS True Justice B10   | CE   | BW    | WW   | YW    | ADG  |       |
| 3BS Earl 90G           | 11.5 | 1.2   | 85.4 | 121.7 | 0.23 |       |
| 3BS 3CTanker 707E      | MCE  | MM    | MWW  | Stay  | CW   | YG    |
| SAV Bismarck 5682      | 6.3  | 23.4  | 65.5 | 18.9  | 37.5 | -0.27 |
| JBS Miss Bismarck 235E | MARB | B FAT | REA  | API   | TI   |       |
| JBS Miss Pace 601Z     | 0.22 | -0.54 | 0.79 | 137.2 | 81.7 |       |

Homo Black  
Another percentage bull with 103 ww ratio and 758 lbs.



28

## JBS Mr Earl 88L

BD: 3-12-23 Black, Polled, PB Simm Reg. #4275334  
Act. BW: 90 lbs. Adj. 205 Wt: 696 WW Ratio: 94 Adj. YW: 1265  
1-5-24 wt: 1040 93 Day ADG: 3.6 Act. Scrotal: 36

|                      |      |        |      |       |      |       |
|----------------------|------|--------|------|-------|------|-------|
| BBS True Justice B10 | CE   | BW     | WW   | YW    | ADG  |       |
| 3BS Earl 90G         | 10.1 | 2.0    | 85.0 | 122.0 | 0.23 |       |
| 3BS 3CTanker 707E    | MCE  | MM     | MWW  | Stay  | CW   | YG    |
| ASR Gunnison B4234   | 5.8  | 22.0   | 65.8 | 19.9  | 39.5 | -0.45 |
| 3C Crocus 6586D      | MARB | B FAT  | REA  | API   | TI   |       |
| 3C Crocus 3338A B    | 0.09 | -0.100 | 1.01 | 135.9 | 80.2 |       |

Homo Black  
PB Earl son full of meat and muscle.

29

## JBS Mr Growth Fund 505L

BD: 3-19-23 Black, Polled, 1/2 Simm Reg. #4275441  
Act. BW: 80 lbs. Adj. 205 Wt: 744 WW Ratio: 101 Adj. YW: 1240  
1-5-24 wt: 1035 93 Day ADG: 3.1 Act. Scrotal: 35

|                          |      |        |      |       |      |      |
|--------------------------|------|--------|------|-------|------|------|
| Basin Payweight 1682     | CE   | BW     | WW   | YW    | ADG  |      |
| Deer Valley Growth Fund  | 14.3 | -1.7   | 85.5 | 140.5 | 0.34 |      |
| Deer Valley Rita 36113   | MCE  | MM     | MWW  | Stay  | CW   | YG   |
| Welshs Dew It Right 067T | 8.9  | 20.6   | 64.0 | 15.6  | 54.1 | 0.00 |
| JBS MS Dew It Right 332C | MARB | B FAT  | REA  | API   | TI   |      |
| JBS Miss Mo Better 057A  | 0.23 | -0.011 | 0.52 | 135.7 | 82.9 |      |

Homo Black  
Really nice 1/2 blood by the popular Angus bull Growth Fund. Moderate framed, thick made calving ease bull. Ratioed above average and excellent EPD's.





## JBS Mr Growth Fund 079L

BD: 3-10-23 Black, Polled, 1/2 Simm Reg. #4275379  
Act. BW: 84 lbs. Adj. 205 Wt: 749 WW Ratio: 102 Adj. YW: 1335  
1-5-24 wt: 1080 93 Day ADG: 3.7 Act. Scrotal: 36

Basin Payweight 1682  
Deer Valley Growth Fund  
Deer Valley Rita 36113  
JBS Pathway 037D  
JBS Miss Pathway 635H  
JBS Miss Arapa Gold 426D

| CE   | BW     | WW   | YW    | ADG  |       |
|------|--------|------|-------|------|-------|
| 12.2 | 0.4    | 93.7 | 153.1 | 0.37 |       |
| MCE  | MM     | MWW  | Stay  | CW   | YG    |
| 8.0  | 23.4   | 70.5 | 14.0  | 58.0 | -0.02 |
| MARB | B FAT  | REA  | API   | TI   |       |
| 0.17 | -0.019 | 0.55 | 126.2 | 84.0 |       |

2 calves/100WWR

Hetero Black

Another moderate framed 1/2 blood that weaned heavy. Stout made bull with top growth EPD's. One of the top gaining bulls on test.



## JBS Mr True North 132L

BD: 3-4-23 Black, Polled, 3/8 Simm Reg. #4275337  
Act. BW: 77 lbs. Adj. 205 Wt: 772 WW Ratio: 105 Adj. YW: 1200  
1-5-24 wt: 1000 93 Day ADG: 2.7 Act. Scrotal: 33

Square B True North 8052  
M&E True North 201  
MK Black Bess 1119  
WCS El Dorado 5209C  
JBS Miss Eldorado 211J  
JBS Miss Bismarck 058Z

| CE   | BW     | WW   | YW    | ADG  |       |
|------|--------|------|-------|------|-------|
| 14.5 | -1.8   | 84.6 | 134.7 | 0.31 |       |
| MCE  | MM     | MWW  | Stay  | CW   | YG    |
| 8.8  | 30.0   | 71.0 | 13.3  | 53.2 | -0.10 |
| MARB | B FAT  | REA  | API   | TI   |       |
| 0.49 | -0.005 | 0.85 | 144.2 | 89.7 |       |

Homo Black

A real eye catching Sim-Angus that ratioed 105 and weaned 772 lbs. His sire was the high selling bull in the M&E Angus 2022 sale. We are really excited about the future of this bull. We will have more of his brothers in the next years sale.



## JBS Mr Growth Fund 812L

BD: 3-16-23 Black, Polled, 3/8 Simm Reg. #4275318  
Act. BW: 86 lbs. Adj. 205 Wt: 701 WW Ratio: 95 Adj. YW: 1165  
1-5-24 wt: 980 93 Day ADG: 3.1 Act. Scrotal: 34

Basin Payweight 1682  
Deer Valley Growth Fund  
Deer Valley Rita 36113  
RBS Boise B63  
JBS Miss Boise 115F  
JBS Miss Bismarck 307Y

| CE   | BW     | WW   | YW    | ADG  |       |
|------|--------|------|-------|------|-------|
| 13.9 | -0.3   | 87.3 | 139.4 | 0.33 |       |
| MCE  | MM     | MWW  | Stay  | CW   | YG    |
| 10.3 | 25.6   | 70.8 | 15.1  | 56.3 | -0.03 |
| MARB | B FAT  | REA  | API   | TI   |       |
| 0.21 | -0.005 | 0.67 | 129.8 | 81.8 |       |

4 calves/102WWR

Homo Black, Hetero Polled

Sim-Angus bull with eye appeal and excellent growth since weaning. Should make excellent females and sale topping steers.



## JBS Mr Gold 167L

BD: 2-21-23 Black, Polled, PB Simm Reg. #4275395  
Act. BW: 75 lbs. Adj. 205 Wt: 744 WW Ratio: 101 Adj. YW: 1300  
1-5-24 wt: 1065 93 Day ADG: 3.5 Act. Scrotal: 36.5

Hook's Eagle 6E  
TJ Gold 274G  
TJ 12C  
Cables Turn Ur Head 501G  
JBS Miss Turn Ur Head 853J  
JBS Miss Domination 121F

| CE   | BW     | WW   | YW    | ADG  |       |
|------|--------|------|-------|------|-------|
| 12.3 | -0.2   | 79.5 | 122.3 | 0.27 |       |
| MCE  | MM     | MWW  | Stay  | CW   | YG    |
| 5.0  | 26.3   | 65.7 | 18.4  | 24.8 | -0.33 |
| MARB | B FAT  | REA  | API   | TI   |       |
| 0.34 | -0.060 | 0.77 | 152.3 | 86.6 |       |

Homo Black

The Gold sons are all from 1st calf heifers with excellent calving ease. Fancy purebred with above average weaning.



34

## JBS Mr Gold 168L

BD: 2-25-23 Black, Polled, PB Simm Reg. #4275339  
Act. BW: 79 lbs. Adj. 205 Wt: 743 WW Ratio: 101 Adj. YW: 1200  
1-5-24 wt: 990 93 Day ADG: 2.9 Act. Scrotal: 33

|                            |      |        |      |       |      |       |
|----------------------------|------|--------|------|-------|------|-------|
| Hook's Eagle 6E            | CE   | BW     | WW   | YW    | ADG  |       |
| TJ Gold 274G               | 12.8 | 0.2    | 83.2 | 126.1 | 0.27 |       |
| TJ 12C                     | MCE  | MM     | MWW  | Stay  | CW   | YG    |
| Cables Turn Ur Head 501G   | 6.1  | 28.2   | 69.3 | 16.9  | 30.8 | -0.38 |
| JBS Miss Turn Ur Head 012J | MARB | B FAT  | REA  | API   | TI   |       |
| JBS Miss Pace 512X         | 0.42 | -0.072 | 0.93 | 155.1 | 90.9 |       |

Homo Black

This Gold son is bred almost identical to the previous lot. Both bulls weaned heavy and have the front pasture look.

35

## JBS Mr Gold 165L

BD: 2-22-23 Black, Polled, PB Simm Reg. #4275398  
Act. BW: 77 lbs. Adj. 205 Wt: 720 WW Ratio: 98 Adj. YW: 1215  
1-5-24 wt: 1000 93 Day ADG: 3.1 Act. Scrotal: 34

|                     |      |        |      |       |      |       |
|---------------------|------|--------|------|-------|------|-------|
| Hook's Eagle 6E     | CE   | BW     | WW   | YW    | ADG  |       |
| TJ Gold 274G        | 13.3 | -0.9   | 80.9 | 119.4 | 0.24 |       |
| TJ 12C              | MCE  | MM     | MWW  | Stay  | CW   | YG    |
| 3BS Earl 90G        | 7.0  | 28.5   | 69.1 | 18.3  | 29.4 | -0.32 |
| JBS Miss Earl 846J  | MARB | B FAT  | REA  | API   | TI   |       |
| JBS Miss Tank2 218F | 0.34 | -0.056 | 0.82 | 154.3 | 88.4 |       |

Homo Black

Another nice calving ease bull that weaned near average and is the ranchers kind.



36

## JBS Mr Gold 108L

BD: 2-22-23 Black, Polled, 3/4 Simm Reg. #4275341  
Act. BW: 80 lbs. Adj. 205 Wt: 711 WW Ratio: 97 Adj. YW: 1245  
1-5-24 wt: 1020 93 Day ADG: 3.4 Act. Scrotal: 35

|                          |      |        |      |       |      |       |
|--------------------------|------|--------|------|-------|------|-------|
| Hook's Eagle 6E          | CE   | BW     | WW   | YW    | ADG  |       |
| TJ Gold 274G             | 13.6 | -1.3   | 76.7 | 120.1 | 0.27 |       |
| TJ 12C                   | MCE  | MM     | MWW  | Stay  | CW   | YG    |
| TJ Main Event 503B       | 6.2  | 27.2   | 65.8 | 16.3  | 29.4 | -0.28 |
| JBS Miss Main Event 653J | MARB | B FAT  | REA  | API   | TI   |       |
| JBS Miss Tank2 821D      | 0.33 | -0.051 | 0.75 | 147.1 | 85.0 |       |

Homo Black

3/4 blood with excellent blend of calving ease and growth.

37

## JBS Mr Gold 136L

BD: 2-19-23 Black, Polled, PB Simm Reg. #4275407  
Act. BW: 60 lbs. Adj. 205 Wt: 680 WW Ratio: 92 Adj. YW: 1130  
1-5-24 wt: 940 93 Day ADG: 2.8 Act. Scrotal: 35

|                            |      |        |      |       |      |       |
|----------------------------|------|--------|------|-------|------|-------|
| Hook's Eagle 6E            | CE   | BW     | WW   | YW    | ADG  |       |
| TJ Gold 274G               | 17.1 | -3.1   | 76.5 | 117.6 | 0.26 |       |
| TJ 12C                     | MCE  | MM     | MWW  | Stay  | CW   | YG    |
| WS Proclamation E202       | 8.8  | 30.2   | 70.0 | 18.6  | 28.7 | -0.23 |
| JBS Miss Proclamation 530J | MARB | B FAT  | REA  | API   | TI   |       |
| JBS Miss Bismarck 302C     | 0.47 | -0.034 | 0.72 | 169.3 | 92.0 |       |

Hetero Black

Calving ease plus in this attractive PB Gold son.

38

## JBS Mr Gold 134L

BD: 2-25-23 Black, Polled, PB Simm Reg. #4275331  
Act. BW: 80 lbs. Adj. 205 Wt: 698 WW Ratio: 95 Adj. YW: 1240  
1-5-24 wt: 1000 93 Day ADG: 3.4 Act. Scrotal: 36

|                        |      |        |      |       |      |       |
|------------------------|------|--------|------|-------|------|-------|
| Hook's Eagle 6E        | CE   | BW     | WW   | YW    | ADG  |       |
| TJ Gold 274G           | 13.8 | -1.2   | 78.0 | 121.7 | 0.27 |       |
| TJ 12C                 | MCE  | MM     | MWW  | Stay  | CW   | YG    |
| WCS El Dorado 5209C    | 7.8  | 26.6   | 66.2 | 15.0  | 29.1 | -0.36 |
| JBS Miss Eldorado 805J | MARB | B FAT  | REA  | API   | TI   |       |
| JBS Miss Boulder 607F  | 0.30 | -0.063 | 0.90 | 146.8 | 86.3 |       |

Homo Black, Homo Polled

Another top calving ease from a really nice Eldorado heifer.

39

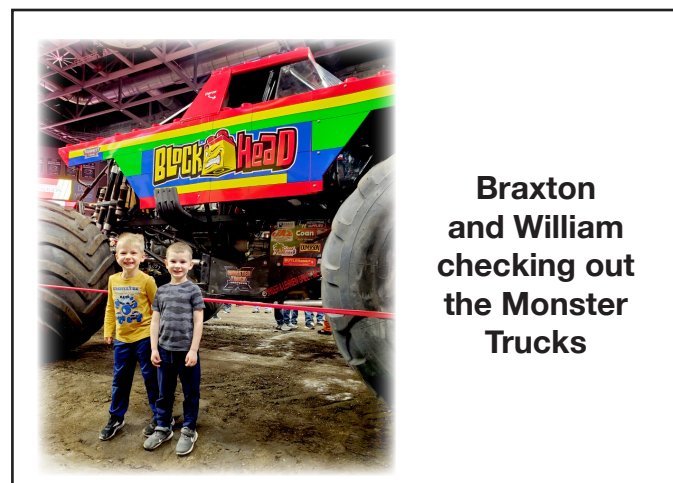
## JBS Mr Gold 072L

BD: 3-1-23 Black, Polled, PB Simm Reg. #4275296  
Act. BW: 82 lbs. Adj. 205 Wt: 701 WW Ratio: 95 Adj. YW: 1215  
1-5-24 wt: 1005 93 Day ADG: 3.2 Act. Scrotal: 34

|                       |      |        |      |       |      |       |
|-----------------------|------|--------|------|-------|------|-------|
| Hook's Eagle 6E       | CE   | BW     | WW   | YW    | ADG  |       |
| TJ Gold 274G          | 13.4 | -0.8   | 78.0 | 119.2 | 0.26 |       |
| TJ 12C                | MCE  | MM     | MWW  | Stay  | CW   | YG    |
| BBS True Justice B10  | 7.1  | 29.7   | 69.3 | 17.0  | 24.4 | -0.36 |
| JBS Miss Justice 544H | MARB | B FAT  | REA  | API   | TI   |       |
| JBS Miss Octane 123C  | 0.34 | -0.059 | 0.87 | 151.3 | 87.0 |       |

2 calves/100 WWR

The Gold sons are all so much alike with built in calving ease.



**Braxton  
and William  
checking out  
the Monster  
Trucks**

40

## JBS Mr High Road 138L

BD: 2-19-23 Black, Polled, 3/4 Simm Reg. #4275369  
Act. BW: 72 lbs. Adj. 205 Wt: 749 WW Ratio: 102 Adj. YW: 1200  
1-5-24 wt: 1025 93 Day ADG: 2.8 Act. Scrotal: 34.5

|                         |      |        |      |       |      |       |
|-------------------------|------|--------|------|-------|------|-------|
| Hook's Beacon 56B       | CE   | BW     | WW   | YW    | ADG  |       |
| KBHR High Road E283     | 16.3 | -2.3   | 89.0 | 137.2 | 0.30 |       |
| WS Miss Sugar C4        | MCE  | MM     | MWW  | Stay  | CW   | YG    |
| Hook's Black Hawk 50B   | 7.2  | 23.7   | 68.3 | 17.7  | 44.1 | -0.33 |
| JBS Miss Blackhawk 935J | MARB | B FAT  | REA  | API   | TI   |       |
| JBS Miss Pathway 412G   | 0.39 | -0.047 | 1.14 | 164.3 | 95.5 |       |

Homo Black

One of the fanciest looking bulls coming from a beautiful Black Hawk heifer. Top growth and calving ease numbers.



42

## JBS Mr High Road 106L

BD: 3-2-23 Black, Polled, PB Simm Reg. #4275300  
Act. BW: 87 lbs. Adj. 205 Wt: 749 WW Ratio: 102 Adj. YW: 1280  
1-5-24 wt: 1030 93 Day ADG: 3.3 Act. Scrotal: 38

|                        |      |        |      |       |      |       |
|------------------------|------|--------|------|-------|------|-------|
| Hook's Beacon 56B      | CE   | BW     | WW   | YW    | ADG  |       |
| KBHR High Road E283    | 11.1 | 1.4    | 85.8 | 135.4 | 0.31 |       |
| WS Miss Sugar C4       | MCE  | MM     | MWW  | Stay  | CW   | YG    |
| Hook's Frontline 40F   | 6.3  | 25.8   | 68.3 | 19.1  | 36.3 | -0.34 |
| JBS Miss Frontline 76J | MARB | B FAT  | REA  | API   | TI   |       |
| 3C Crocus 6815D        | 0.54 | -0.058 | 0.98 | 163.7 | 93.6 |       |

Weaned above average with strong maternal traits.



41

## JBS Mr High Road 0812L

BD: 3-27-23 Black, Polled, PB Simm Reg. #4275323  
Act. BW: 87 lbs. Adj. 205 Wt: 738 WW Ratio: 100 Adj. YW: 1190  
1-5-24 wt: 960 93 Day ADG: 2.7 Act. Scrotal: 35

|                        |      |        |      |       |      |       |
|------------------------|------|--------|------|-------|------|-------|
| Hook's Beacon 56B      | CE   | BW     | WW   | YW    | ADG  |       |
| KBHR High Road E283    | 14.0 | -0.3   | 79.5 | 118.4 | 0.24 |       |
| WS Miss Sugar C4       | MCE  | MM     | MWW  | Stay  | CW   | YG    |
| CNS Dream On L186      | 7.7  | 26.4   | 66.2 | 20.8  | 27.5 | -0.31 |
| JBS Miss Dream On 418U | MARB | B FAT  | REA  | API   | TI   |       |
| JBS Miss P Drive 944P  | 0.28 | -0.050 | 0.83 | 155.5 | 85.3 |       |

Dam: 10 calves/106 WWR

Hetero Black, Homo Polled

This bull comes from one of our favorite old cows. This is her 15th calf and her last. A super cow family with longevity as the granddam raised 16 calves both natural and E.T.



43

## JBS Mr High Road 155L

BD: 2-20-23 Black, Polled, PB Simm Reg. #4275366  
Act. BW: 78 lbs. Adj. 205 Wt: 707 WW Ratio: 96 Adj. YW: 1215  
1-5-24 wt: 1000 93 Day ADG: 3.2 Act. Scrotal: 35

|                        |      |        |      |       |      |       |
|------------------------|------|--------|------|-------|------|-------|
| Hook's Beacon 56B      | CE   | BW     | WW   | YW    | ADG  |       |
| KBHR High Road E283    | 14.4 | -0.9   | 90.6 | 141.8 | 0.32 |       |
| WS Miss Sugar C4       | MCE  | MM     | MWW  | Stay  | CW   | YG    |
| Hook's Eagle 6E        | 6.8  | 23.8   | 70.2 | 17.9  | 45.7 | -0.35 |
| JBS Miss Eagle 967J    | MARB | B FAT  | REA  | API   | TI   |       |
| R&R Miss Diplomat G967 | 0.52 | -0.051 | 1.17 | 170.6 | 99.1 |       |

Homo Black

Super stylish PB with good growth and calving ease. His Eagle dam was a high ratioing heifer in our 2021 crop.

44

## JBS Mr High Road 124L

BD: 3-3-23 Black, Polled, PB Simm Reg. #4275316  
Act. BW: 81 lbs. Adj. 205 Wt: 708 WW Ratio: 96 Adj. YW: 1145  
1-5-24 wt: 925 93 Day ADG: 2.7 Act. Scrotal: 34.5

|                         |      |        |      |       |      |       |
|-------------------------|------|--------|------|-------|------|-------|
| Hook's Beacon 56B       | CE   | BW     | WW   | YW    | ADG  |       |
| KBHR High Road E283     | 12.8 | 0.2    | 88.2 | 136.1 | 0.30 |       |
| WS Miss Sugar C4        | MCE  | MM     | MWW  | Stay  | CW   | YG    |
| BCLR Cash Flow C820     | 6.9  | 22.1   | 67.2 | 20.1  | 42.2 | -0.43 |
| JBS Miss Cash Flow 537J | MARB | B FAT  | REA  | API   | TI   |       |
| JBS Miss Tanker 218C    | 0.28 | -0.066 | 1.27 | 156.5 | 90.1 |       |

Homo Black

Another nice High Road with top calving ease, ample growth and strong carcass traits.

45

## JBS Mr High Road 145L

BD: 2-22-23 Black, Polled, PB Simm Reg. #4275310  
Act. BW: 70 lbs. Adj. 205 Wt: 701 WW Ratio: 95 Adj. YW: 1240  
1-5-24 wt: 1000 93 Day ADG: 3.4 Act. Scrotal: 33

|                        |      |        |      |       |      |       |
|------------------------|------|--------|------|-------|------|-------|
| Hook's Beacon 56B      | CE   | BW     | WW   | YW    | ADG  |       |
| KBHR High Road E283    | 15.9 | -2.1   | 77.2 | 115.6 | 0.24 |       |
| WS Miss Sugar C4       | MCE  | MM     | MWW  | Stay  | CW   | YG    |
| Oval All Time A322     | 8.4  | 28.8   | 68.8 | 18.8  | 36.5 | -0.40 |
| JBS Miss All Time 916J | MARB | B FAT  | REA  | API   | TI   |       |
| JBS Miss Dream On 316W | 0.33 | -0.076 | 1.00 | 159.5 | 88.2 |       |

A true calving ease bull moderate in frame with eye appeal.

46

## JBS Mr Genesis 727L

BD: 3-6-23 Black, Polled, PB Simm Reg. #4275413  
Act. BW: 95 lbs. Adj. 205 Wt: 817 WW Ratio: 111 Adj. YW: 1240  
1-5-24 wt: 1100 93 Day ADG: 2.6 Act. Scrotal: 34.5

|                       |      |        |       |       |       |       |
|-----------------------|------|--------|-------|-------|-------|-------|
| WS Proclamation E202  | CE   | BW     | WW    | YW    | ADG   |       |
| LBRS Genesis G69      | 9.3  | 1.8    | 105.8 | 163.4 | 0.36  |       |
| LBR Diana D69         | MCE  | MM     | MWW   | Stay  | CW    | YG    |
| JBS Big Casino 336Y   | 6.1  | 25.2   | 76.3  | 18.3  | 57.6  | -0.27 |
| JBS Miss Casino 91E   | MARB | B FAT  | REA   | API   | TI    |       |
| Mohnen Blackcap A2223 | 0.43 | -0.056 | 1.05  | 160.1 | 101.7 |       |

Dam: 5 calves/103 WWR  
Homo Black, Homo Polled  
One of the top performance bulls this year. Ratioed 111 and 817 lbs. Deep bodied, thick topped growth bull. Ranks in the top 2% for WW and YW.



47

## JBS Mr Genesis 836L

BD: 3-24-23 Black, Polled, 3/4 Simm Reg. #4275409  
Act. BW: 97 lbs. Adj. 205 Wt: 737 WW Ratio: 100 Adj. YW: 1375  
1-5-24 wt: 1095 93 Day ADG: 4.0 Act. Scrotal: 35.5

|                      |      |        |       |       |      |       |
|----------------------|------|--------|-------|-------|------|-------|
| WS Proclamation E202 | CE   | BW     | WW    | YW    | ADG  |       |
| LBRS Genesis G69     | 7.4  | 3.4    | 100.5 | 157.1 | 0.35 |       |
| LBR Diana D69        | MCE  | MM     | MWW   | Stay  | CW   | YG    |
| SAV Renown 3439      | 3.8  | 19.3   | 70.1  | 17.5  | 56.8 | -0.18 |
| JBS Miss Renown 507F | MARB | B FAT  | REA   | API   | TI   |       |
| JBS Miss Casino 106C | 0.48 | -0.026 | 0.98  | 148.8 | 94.6 |       |

Homo Black, Homo Polled  
A growth bull that has really poured it on since weaning. Ranks in the top 1% for WW EPD. Tied as the top gaining bull on test.



48

## JBS Mr Genesis 657L

BD: 3-4-23 Black, Polled, PB Simm Reg. #4275311  
Act. BW: 89 lbs. Adj. 205 Wt: 680 WW Ratio: 92 Adj. YW: 1170  
1-5-24 wt: 1010 93 Day ADG: 3.1 Act. Scrotal: 37

|                          |      |        |      |       |      |       |
|--------------------------|------|--------|------|-------|------|-------|
| WS Proclamation E202     | CE   | BW     | WW   | YW    | ADG  |       |
| LBRS Genesis G69         | 7.7  | 2.6    | 83.1 | 127.1 | 0.28 |       |
| LBR Diana D69            | MCE  | MM     | MWW  | Stay  | CW   | YG    |
| Double J Straightup Y132 | 3.3  | 27.8   | 71.9 | 17.2  | 46.7 | -0.27 |
| JBS Ms Straight Up 743D  | MARB | B FAT  | REA  | API   | TI   |       |
| JBS Miss LTD 903T        | 0.46 | -0.054 | 0.92 | 146.3 | 87.5 |       |

Homo Black  
Big framed long bodied bull that has the eye appeal we like.

49

## JBS Mr Genesis 511L

BD: 3-15-23 Black, Polled, 3/4 Simm Reg. #4275487  
Act. BW: 94 lbs. Adj. 205 Wt: 655 WW Ratio: 89 Adj. YW: 1150  
1-5-24 wt: 955 93 Day ADG: 3.1 Act. Scrotal: 38.5

|                        |      |        |      |       |      |       |
|------------------------|------|--------|------|-------|------|-------|
| WS Proclamation E202   | CE   | BW     | WW   | YW    | ADG  |       |
| LBRS Genesis G69       | 10.5 | 1.6    | 83.1 | 127.9 | 0.28 |       |
| LBR Diana D69          | MCE  | MM     | MWW  | Stay  | CW   | YG    |
| JBS Big Casino 336Y    | 5.5  | 26.5   | 70.8 | 20.3  | 48.6 | -0.26 |
| JBS Miss Casino 701C   | MARB | B FAT  | REA  | API   | TI   |       |
| JBS Miss Frontier 501T | 0.51 | -0.054 | 0.91 | 160.3 | 90.1 |       |

Smooth made Genesis. Dam is a beautiful Big Casino daughter that has had several bulls in our sale.



50

## JBS Mr 637 719L

BD: 3-12-23 Black, Polled, PB Simm Reg. #4275358  
Act. BW: 87 lbs. Adj. 205 Wt: 823 WW Ratio: 112 Adj. YW: 1265  
1-5-24 wt: 1100 93 Day ADG: 2.8 Act. Scrotal: 38.5

|                         |      |        |      |       |      |       |
|-------------------------|------|--------|------|-------|------|-------|
| WS All-Around Z35       | CE   | BW     | WW   | YW    | ADG  |       |
| TSN All Around F637     | 10.4 | 0.7    | 78.8 | 118.1 | 0.25 |       |
| TSN Miss Cowboy D769    | MCE  | MM     | MWW  | Stay  | CW   | YG    |
| Hook's Broadway 11B     | 5.9  | 25.3   | 61.4 | 18.9  | 22.3 | -0.24 |
| JBS Miss Broadway 803E  | MARB | B FAT  | REA  | API   | TI   |       |
| JBS Miss Magnitude 132U | 0.28 | -0.058 | 0.48 | 143.3 | 82.1 |       |

Dam: 5 calves/109 WWR  
Homo Black, Homo Polled  
Blaze face bull with performamnce and eye appeal. Ranked as the #5 bull at weaning. Dam ratios 109 on 5 calves.



Lot 50

51

## JBS Mr 637 804L

BD: 3-7-23 Black, Polled, PB Simm Reg. #4275320  
Act. BW: 82 lbs. Adj. 205 Wt: 700 WW Ratio: 95 Adj. YW: 1200  
1-5-24 wt: 1015 93 Day ADG: 3.2 Act. Scrotal: 37

|                         |      |        |      |       |      |       |
|-------------------------|------|--------|------|-------|------|-------|
| WS All-Around Z35       | CE   | BW     | WW   | YW    | ADG  |       |
| TSN All Around F637     | 12.7 | 0.1    | 65.6 | 100.8 | 0.22 |       |
| TSN Miss Cowboy D769    | MCE  | MM     | MWW  | Stay  | CW   | YG    |
| JBS Mr Fource 107A      | 7.8  | 28.6   | 61.8 | 18.3  | 24.9 | -0.35 |
| JBS Miss Skyforce 0652F | MARB | B FAT  | REA  | API   | TI   |       |
| JBS Miss Tank2 929D     | 0.24 | -0.073 | 0.74 | 140.9 | 75.7 |       |

Dam: 3 calves/98 WWR  
Good calving ease bull with strong maternal numbers.

52

## JBS Mr Dakota 835L

BD: 3-15-23 Black, Polled, 5/8 Simm Reg. #4275370  
Act. BW: 96 lbs. Adj. 205 Wt: 783 WW Ratio: 106 Adj. YW: 1265  
1-5-24 wt: 1075 93 Day ADG: 3.0 Act. Scrotal: 37.5

|                            |      |        |      |       |      |       |
|----------------------------|------|--------|------|-------|------|-------|
| KRJ Dakota Outlaw G974     | CE   | BW     | WW   | YW    | ADG  |       |
| KRJ Dakota Made J172       | 9.2  | 1.6    | 84.9 | 132.8 | 0.30 |       |
| Double J Miss X066         | MCE  | MM     | MWW  | Stay  | CW   | YG    |
| SAV Renown 3439            | 3.5  | 16.1   | 56.7 | 14.3  | 33.0 | -0.27 |
| JBS Miss Renown 505F       | MARB | B FAT  | REA  | API   | TI   |       |
| JBS Miss Dew It Right 332C | 0.09 | -0.052 | 0.77 | 118.0 | 76.9 |       |

Dam: 4 calves/99 WWR  
Homo Black  
Nice percentage bull that ratioed 106 and weaned 783 lbs. Thick topped, big butted moderate framed bull.



Lot 52

53

## JBS Mr Dakota 639L

BD: 3-28-23 Black, Polled, 5/8 Simm Reg. #4275387  
Act. BW: 91 lbs. Adj. 205 Wt: 701 WW Ratio: 95 Adj. YW: 1165  
1-5-24 wt: 950 93 Day ADG: 2.9 Act. Scrotal: 35

|                          |      |        |      |       |      |       |
|--------------------------|------|--------|------|-------|------|-------|
| KRJ Dakota Outlaw G974   | CE   | BW     | WW   | YW    | ADG  |       |
| KRJ Dakota Made J172     | 10.0 | 1.7    | 76.1 | 117.5 | 0.26 |       |
| Double J Miss X066       | MCE  | MM     | MWW  | Stay  | CW   | YG    |
| SAV Brilliance 8077      | 3.0  | 23.5   | 62.3 | 14.3  | 35.0 | -0.25 |
| JBS Miss Brilliance 232D | MARB | B FAT  | REA  | API   | TI   |       |
| JBS Miss Indy 750Z       | 0.15 | -0.044 | 0.77 | 116.7 | 73.0 |       |

Dam: 6 calves/105 WWR  
Another Simm-Angus with extra length. Cow has had some top bulls in previous sales.





**JBS Mr 750NR 846L**

|                   |                         |                  |
|-------------------|-------------------------|------------------|
| BD: 4-3-23        | Black, Polled, 5/8 Simm | Reg. #4275436    |
| Act. BW: 105 lbs. | Adj. 205 Wt: 740        | WW Ratio: 100    |
| Adj. YW: 1330     |                         |                  |
| 1-5-24 wt: 1035   | 93 Day ADG: 3.7         | Act. Scrotal: 36 |

Sim-Angus bull that weaned heavy and will make some top feeders.

| MARB | B FAT  | REA  | API   | TI   |
|------|--------|------|-------|------|
| 0.37 | -0.052 | 0.74 | 136.7 | 80.5 |

A black cow, likely a Friesian, stands in profile facing left. It is positioned in a field covered with dry straw or hay. In the background, a red metal fence runs across the frame, with a white building visible behind it. The cow has a yellow tag in its left ear. The text "Lot 54" is printed in a bold, blue, sans-serif font in the bottom left corner of the image.

## Notes

[illegible]

# *Benda Simmental Ranch*

JIM AND JAY BENDA  
26106 366th Ave. • Kimball, SD 57355



Address Service Requested

Please bring this catalog to the SALE.

**Monday, February 12, 2024 • 1:00 p.m.**  
**Kimball Livestock Exchange**  
**Kimball, South Dakota**

**[WWW.BENDARANCH.COM](http://WWW.BENDARANCH.COM)**